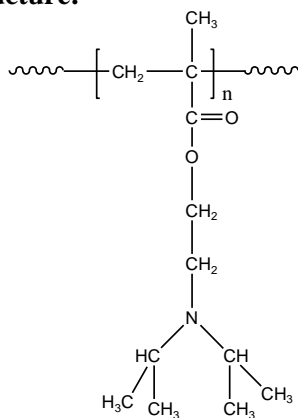


Sample Name: Poly (N,N-diisopropyl aminoethyl methacrylate)

Sample #: P16308A-DIPAEMA

Structure:

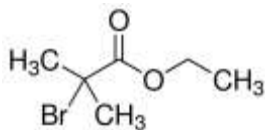


Composition:

Mn x 10 ³	PDI
50.0	4.5

Synthesis:

The polymer was synthesized by ATRP polymerization process using ethyl 2-bromoisobutyrate as initiator:



Characterization:

The product was characterized by size exclusion chromatography (SEC).

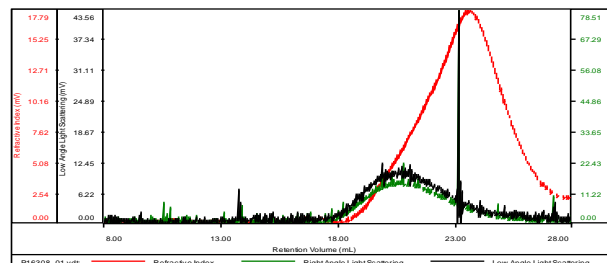
Solubility:

Poly (N,N-diisopropyl aminoethyl methacrylate) is soluble in THF, CHCl₃, dioxane and DMF.

SEC elugram of Homopolymer:

P16308A-DIPAEMA

Concentration (mg/mL)	0.5169
Sample dn/dc (mL/g)	0.0840
Method File	PS100K-SEPT19-2017-0000.vcm
Column Set	3x PL 1113-6300
Solvent	THF



Sample	Mn (Da)	Mw (Da)	Mw/Mn	IV (dL/g)	Mp (Da)
P16308_01.vdt	49,931	225,294	4.512	0.2942	43,939