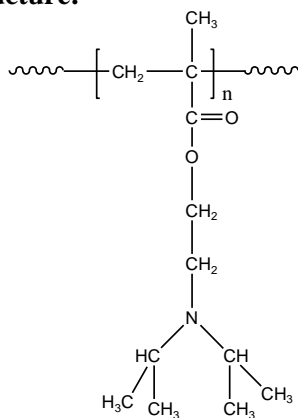


Sample Name: Poly (N,N-diisopropyl aminoethyl methacrylate)

Sample #: P16308B-DIPAEMA

Structure:

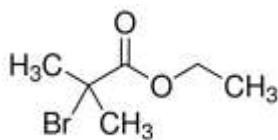


Composition:

Mn x 10 ³	PDI
55.0	1.5

Synthesis:

The polymer was synthesized by ATRP polymerization process using ethyl 2-bromoisobutyrate as initiator:



Characterization:

The product was characterized by size exclusion chromatography (SEC).

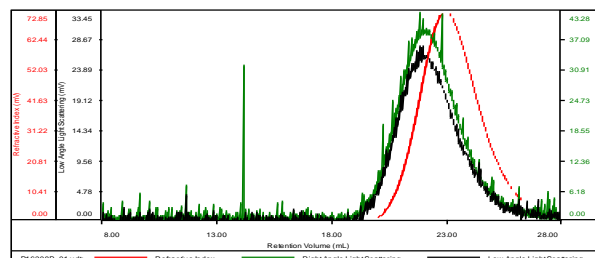
Solubility:

Poly (N,N-diisopropyl aminoethyl methacrylate) is soluble in THF, CHCl₃, dioxane and DMF.

SEC elugram of Homopolymer:

P16308B-DIPAEMA

Concentration (mg/mL)	1.5987
Sample dn/dc (mL/g)	0.0840
Method File	PS100K-SEPT19-2017-0000.vcm
Column Set	3x PL 1113-6300
Solvent	THF



Sample	Mn (Da)	Mw (Da)	Mw/Mn	IV (dL/g)	Mp (Da)
P16308B_01.vdt	55,029	83,218	1.512	0.2379	63,538