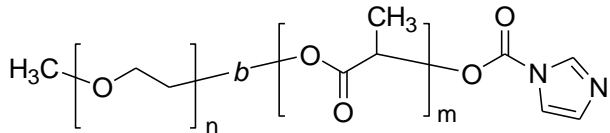


Sample Name:

Imidazole end functionalized Poly (ethylene oxide - b- lactide) (DL form)

Sample #: **P40845A-mPEGLA-ID (DL form)**

Structure:

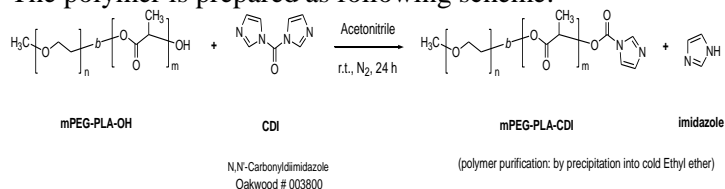


Composition:

| | |
|-----------------------------------|------|
| Mn x 10 ³ PEO-b-PLA | PDI |
| 2.0-b-2.0 | 1.13 |

Synthesis Procedure:

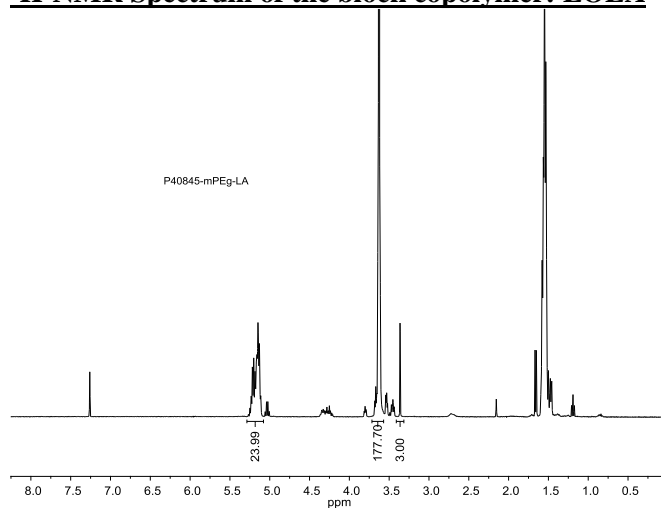
The polymer is prepared as following scheme:



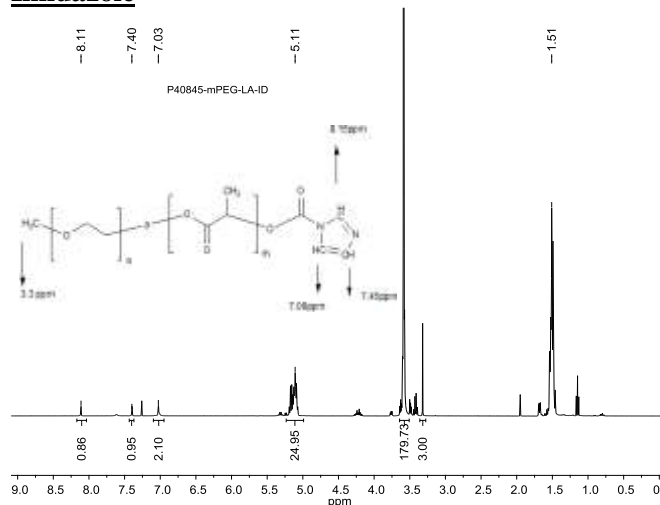
Characterization:

The product was characterized by size exclusion chromatography (SEC), and ¹H NMR.

¹H-NMR Spectrum of the block copolymer: EOLA

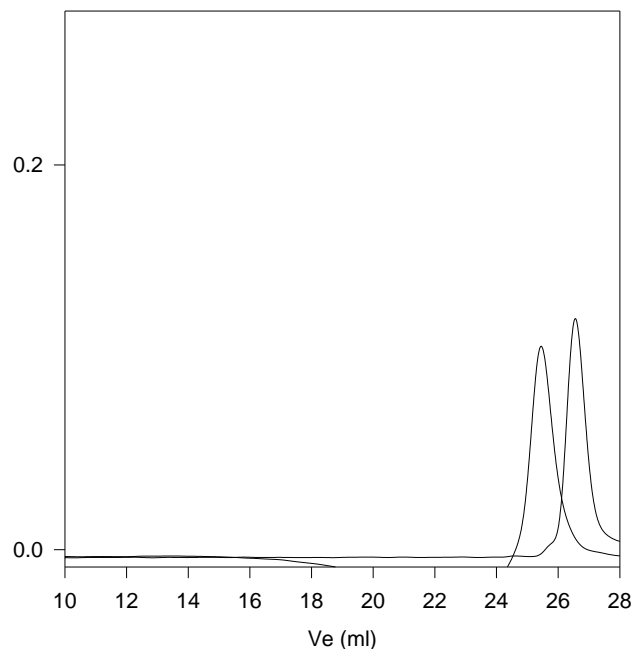


¹H-NMR Spectrum of the block copolymer EOLA-Imidazole



SEC of the block copolymer:

P40845A- mPEG-LA-ID (DL form)



Size exclusion chromatography:

— Poly(ethylene glycol), M_n=2000, M_w=2100, PI=1.06

— Block Copolymer PEO(2000)-b-PLA(2000), PI=1.13

Composition from ¹H NMR

Dp: EO(45 units)-b-LA(27 units)