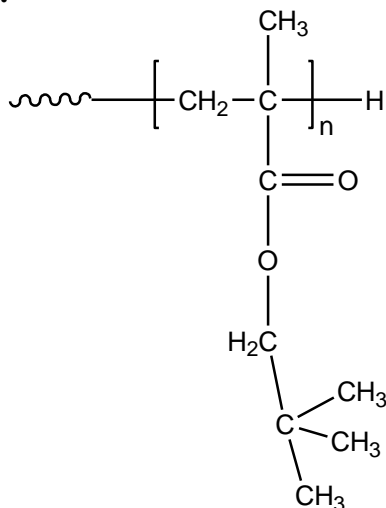


Sample Name: Poly (neopentyl methacrylate)

Sample #: P40914A-NPMA

**Structure:**



**Composition:**

$M_n \times 10^3$ (g/mol)	$M_w/M_n$
57.5	1.03

**Synthesis procedure:**

The polymer was synthesized by anionic polymerization process.

**Characterization:**

The molecular weight and polydispersity index ( $M_w/M_n$ ) of poly (neopentyl methacrylate) were obtained by size exclusion chromatography (SEC).

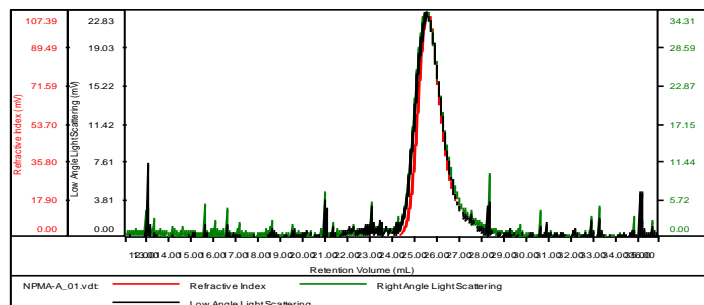
**Solubility:**

Poly (neopentyl methacrylate) is soluble in THF, chloroform, toluene, and dioxane. The polymer precipitates from hexanes, methanol, and ethanol.

**SEC elugram of the homopolymer:**

**P40914A-NPMA**

Concentration (mg/mL)	7.9389
Sample dn/dc (mL/g)	0.0840
Method File	PS80K-jan-2018-0000.vcm
Column Set	3x PL 1113-6300
Solvent	THF



Sample	$M_n$ (Da)	$M_w$ (Da)	$M_w/M_n$	$IV$ (dL/g)	$M_p$ (Da)
NPMA-A_01.vdt	57,430	59,521	1.036	0.2533	50,527