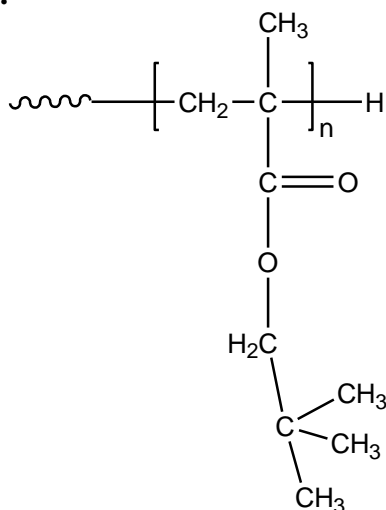


Sample Name: Poly (neopentyl methacrylate)

Sample #: P40914B-NPMA

**Structure:**



**Composition:**

$M_n \times 10^3$ (g/mol)	$M_w/M_n$
138.0	1.3

**Synthesis procedure:**

The polymer was synthesized by anionic polymerization process.

**Characterization:**

The molecular weight and polydispersity index ( $M_w/M_n$ ) of poly (neopentyl methacrylate) were obtained by size exclusion chromatography (SEC).

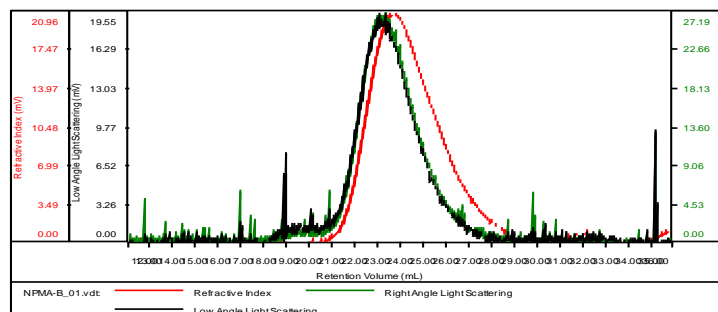
**Solubility:**

Poly (neopentyl methacrylate) is soluble in THF, chloroform, toluene, and dioxane. The polymer precipitates from hexanes, methanol, and ethanol.

**SEC elugram of the homopolymer:**

**P40914B-NPMA**

Concentration (mg/mL)	4.1209
Sample dn/dc (mL/g)	0.0840
Method File	PS80K-jan-2018-0000.vcm
Column Set	3x PL 1113-6300
Solvent	THF



Sample	Mn (Da)	Mw (Da)	Mw/Mn	IV (dL/g)	Mp (Da)
NPMA-B_01.vdt	137,972	180,639	1.309	0.5209	215,046