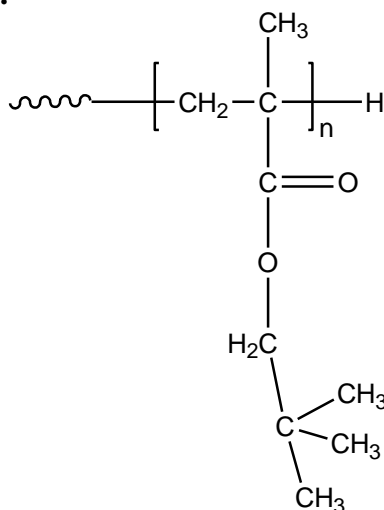


Sample Name: Poly (neopentyl methacrylate)

Sample #: P40920-NPMA

Structure:



Composition:

| $M_n \times 10^3$ (g/mol) | M_w/M_n |
|---------------------------|-----------|
| 135.0 | 1.05 |

Synthesis procedure:

The polymer was synthesized by anionic polymerization process.

Characterization:

The molecular weight and polydispersity index (M_w/M_n) of poly (neopentyl methacrylate) were obtained by size exclusion chromatography (SEC).

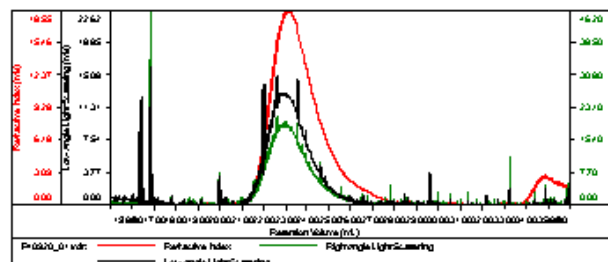
Solubility:

Poly (neopentyl methacrylate) is soluble in THF, chloroform, toluene, and dioxane. The polymer precipitates from hexanes, methanol, and ethanol.

SEC elugram of the homopolymer:

P40920 NPMA

| | |
|-----------------------|-----------------------|
| Concentration (mg/mL) | 2.5666 |
| Sample chkb (mL/g) | 0.0840 |
| Method File | P580Kjsh-20180000.vcm |
| Column Set | 3x PL 1113-6000 |
| Solvent | THF |



| Sample | Mn(Da) | Mw(Da) | Mw/Mn | IV(dL/g) | MP(Da) |
|---------------|---------|---------|-------|----------|---------|
| P40920_01.vcl | 135,251 | 147,547 | 1.088 | 0.4487 | 152,755 |