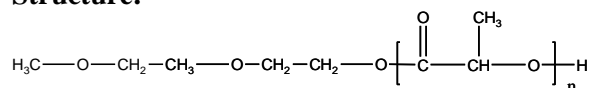


Sample Name: Poly lactide mono methoxy terminated (DL-form)

Sample #: P40950-LA (DL-Form)

Structure:

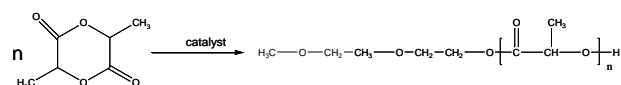


Composition:

$M_n \times 10^3$	PDI
2.15	1.20
$T_g (^{\circ}\text{C})$	24

Synthesis Procedure:

The polymerization of 3,6-dimethyl-1,4-dioxane-2,5-dione was carried out in bulk.



Purification:

The polymeric solution was precipitated from CHCl_3 and/or acetone into a large excess of hexane.

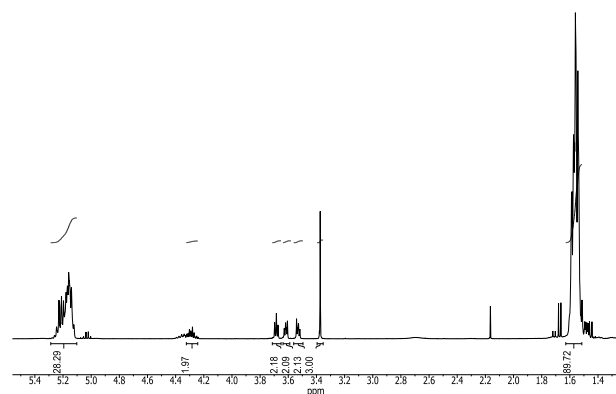
Solubility:

Poly (DL-lactide) is soluble in toluene, THF, CHCl_3 and CH_2Cl_2 . The polymer is insoluble in methanol, hexane and ether.

Characterization:

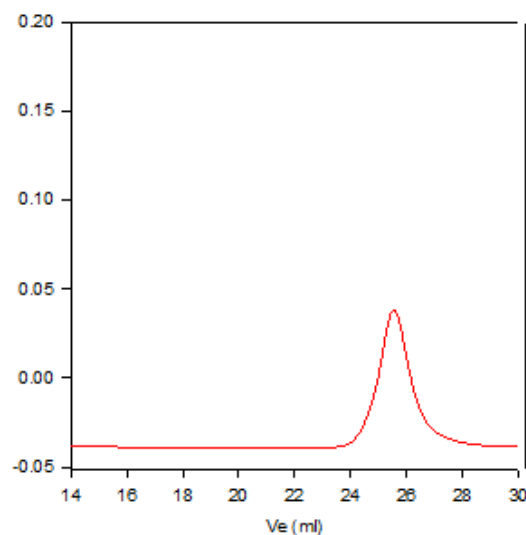
The molecular weight is obtained from ^1H NMR and polydispersity index (PDI) was obtained by size exclusion chromatography.

^1H NMR of the polymer:



SEC of polylactide:

P40950-LA(DL form)



Size exclusion chromatograph of polymer
 $M_n = 2150$ $M_w = 2500$, $PI = 1.20$