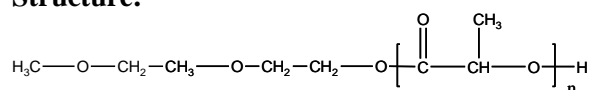


Sample Name: Polylactide mono methoxy terminated (DL form)

Sample #: P40948-LA (DL-Form)

Structure:

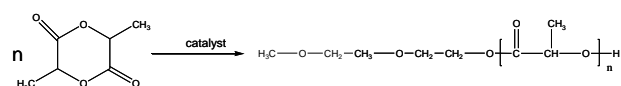


Composition:

$M_n \times 10^3$	PDI
2.5	1.25
$T_g (^{\circ}\text{C})$	24

Synthesis Procedure:

The polymerization of 3,6-dimethyl-1,4-dioxane-2,5-dione was carried out in bulk.



Purification:

The polymeric solution was precipitated from CHCl_3 and/or acetone into a large excess of hexane.

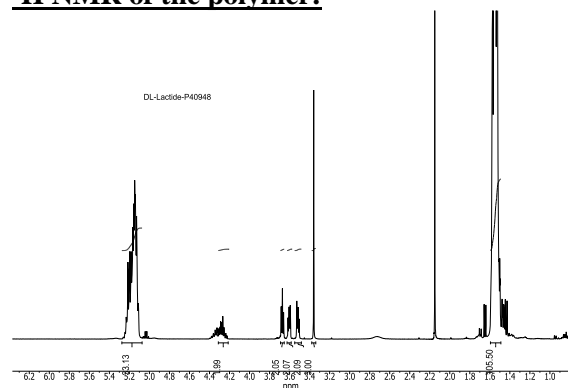
Solubility:

Poly(DL-lactide) is soluble in toluene, THF, CHCl_3 and CH_2Cl_2 . The polymer is insoluble in methanol, hexane and ether.

Characterization:

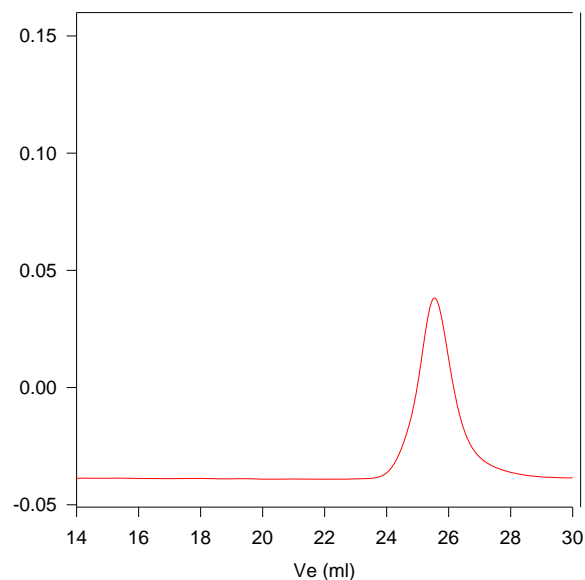
The molecular weight is obtained from ^1H NMR and polydispersity index (PDI) was obtained by size exclusion chromatography.

^1H NMR of the polymer:



SEC of polylactide:

P40948-LA(DL form)



Size exclusion chromatograph of polymer

$M_n=2500$, $M_w=3100$, $PI=1.25$