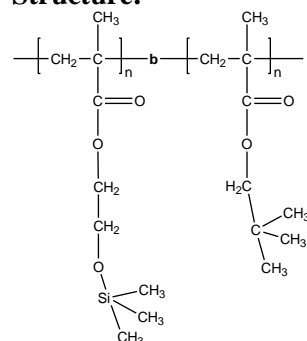


Sample Name: Poly (Trimethylsiloxy 2- ethyl methacrylate-b-Neopentyl methacrylate)

Sample #: P40960A-HEMATMSNPMA

Structure:



Composition:

Mn $\times 10^3$ HEMA-TMS-b-NPMA	PDI
9.5-b-59.0	1.27
T _g for NPMA block:	119°C

Synthesis Procedure:

Polymer was synthesized by GTP polymerization process.

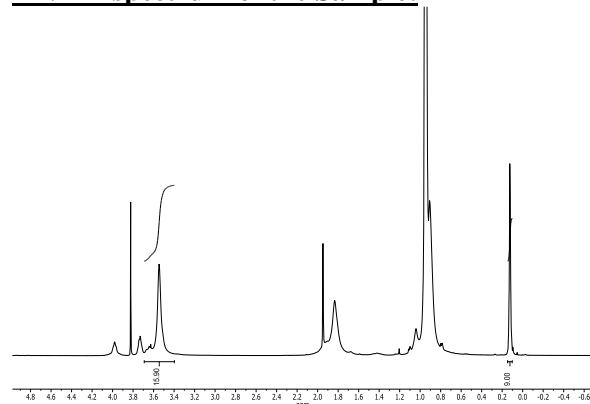
Characterization:

Polymer was analyzed by size exclusion chromatography (SEC) to obtain the molecular weight and polydispersity index (PDI). The final block copolymer composition was calculated from HNMR analysis.

Thermal analysis

Thermal analysis of the samples was carried out on a TA Q100 differential scanning calorimeter at a heating rate of 10°C/min. The midpoint of the slope change of the heat flow plot of the second heating scan was considered as the glass transition temperature (T_g).

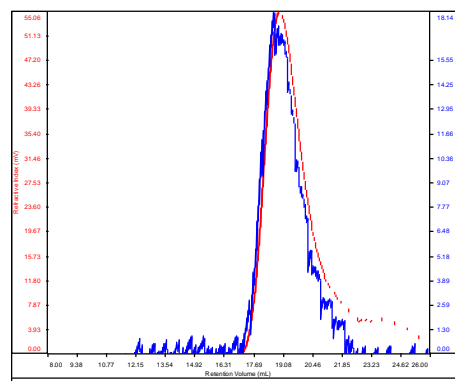
HNMR spectrum of the Sample:



SEC elugram of the HEMATMS block:

P40960-1

Conc	8.4407
dn/dc	0.0650
Solvent	DMF w 0.023M LiBr
Flow Rate	0.7000
Method	PS80K_2018-02-09-0000.vcm

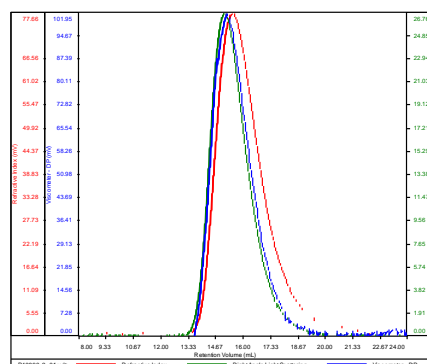


Sample	Mn	Mw	Mp	Mw/Mn	IV
P40960-1_01.vdt	9,446	10,536	7,904	1.115	0.0937

SEC elugram of the block copolymer:

P40960-2

Conc	11.4188
dn/dc	0.0680
Solvent	DMF w 0.023M LiBr
Flow Rate	0.7000
Method	PS80K_2018-02-09-0000.vcm



Sample	Mn	Mw	Mp	Mw/Mn	IV
P40960-2_01.vdt	66,257	86,481	94,359	1.267	0.2278

DSC thermogram for NPMA block:

