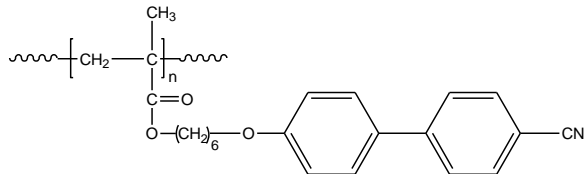


Sample Name:

Poly(6-(4'-cynaobiphenyl-4-yloxy)hexyl methacrylate)

Sample #: **P14424-4CNBPHMA**

Structure:

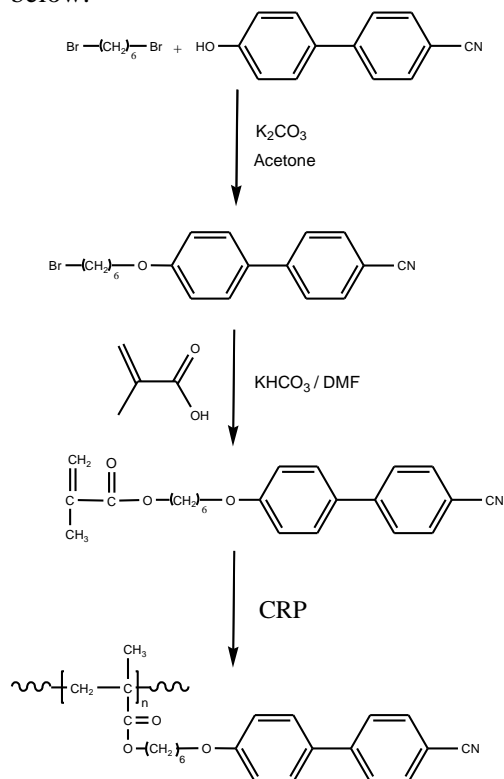


Composition:

Mn x 10 ³	PDI
34.5	1.5
Tg (°C)	56
Tm (°C)	109.6

Synthesis Procedure:

Poly(6-(4'-cynaobiphenyl-4-yloxy)hexyl methacrylate) is obtained by control radical polymerization of the monomer. The reaction scheme used for the polymer synthesis is shown below:



Characterization:

The molecular weight and polydispersity index (PDI) of Poly(6-(4'-cynaobiphenyl-4-yloxy)hexyl methacrylate) are obtained by size exclusion chromatography and use polystyrene as standard.

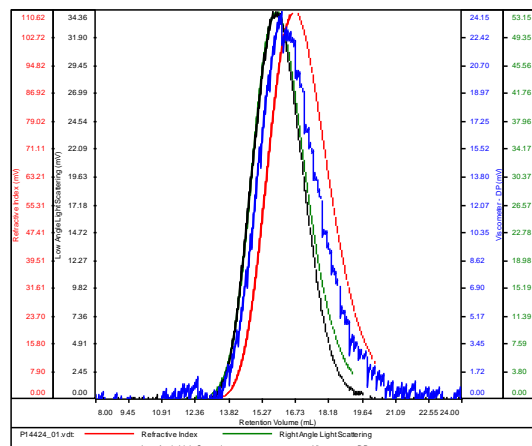
Solubility:

Poly(6-(4'-cynaobiphenyl-4-yloxy)hexyl methacrylate) is soluble in THF, acetone, dichloromethane and chloroform but insoluble in hexane, ethanol and water.

SEC of Homopolymer:

P14424

Conc	8.4838
dn/dc	0.1650
Solvent	DMF w 0.023M LiBr
Flow Rate	0.7000
Method	PS80K_2018-02-09-0000.vcm



Sample	Mn	Mw	Mp	Mw/Mn	IV
P14424_01.vdt	34,473	51,646	46,601	1.498	0.1023

DSC of Homopolymer:

Sample: P14424_4CNBPHMA
Size: 9.9000 mg

File: P14424_4CNBPHMA.001

