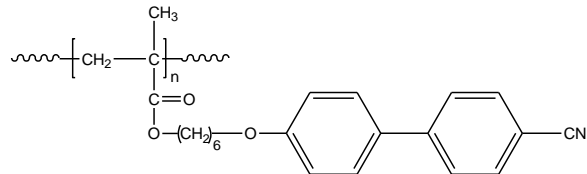


Sample Name:

**Poly(6-(4'-cynaobiphenyl-4-yloxy)hexyl methacrylate)**

Sample #: **P14428-4CNBPHMA**

**Structure:**

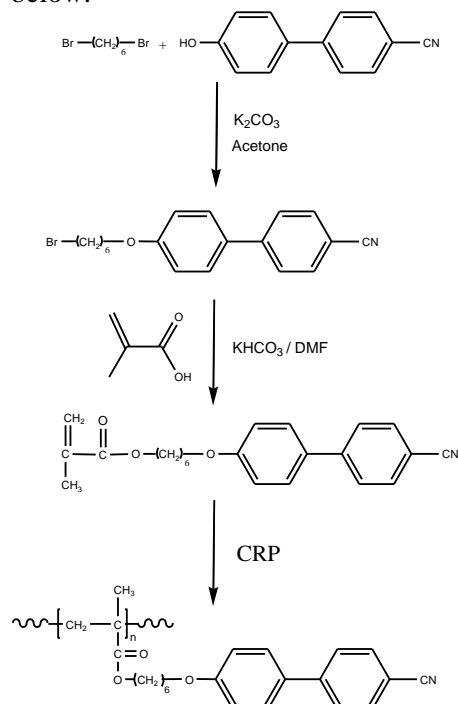


**Composition:**

Mn x 10 <sup>3</sup>	PDI
5.0	1.24
Tg (°C)	40.5
Tm (°C)	89.8

**Synthesis Procedure:**

Poly(6-(4'-cynaobiphenyl-4-yloxy)hexyl methacrylate) is obtained by control radical polymerization of the monomer. The reaction scheme used for the polymer synthesis is shown below:



**Characterization:**

The molecular weight and polydispersity index (PDI) of Poly(6-(4'-cynaobiphenyl-4-yloxy)hexyl methacrylate) are obtained by size exclusion chromatography and use polystyrene as standard.

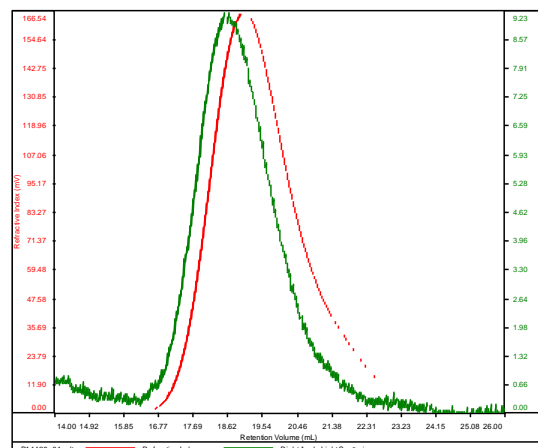
**Solubility:**

Poly(6-(4'-cynaobiphenyl-4-yloxy)hexyl methacrylate) is soluble in THF, acetone, dichloromethane and chloroform but insoluble in hexane, ethanol and water.

**SEC of Homopolymer:**

P14428

Conc	10.7030
dn/dc	0.1650
Solvent	DMF w 0.023M LiBr
Flow Rate	0.7000
Method	PS80k_2018-02-09-0000.vcm



Sample	Mn	Mw	Mp	Mw/Mn	IV
P14428_01.vdt	4,874	6,031	6,070	1.237	0.0482

**DSC of Homopolymer:**

Sample: P14428\_4CNBPHMA  
Size: 6.6000 mg

File: P14428\_4CNBPHMA.001

