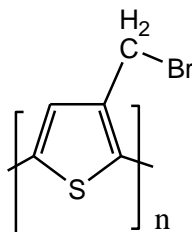


Sample Name:

Poly(3-bromomethylthiophene-2,5-diyl)

Sample #: **P14654C-3BrMTh**

Structure:



Composition:

Mn x 10 ³	PDI	HT
32.5	2.3	HT (head to tail)

Purification of polymer:

Purification was carried out extensively as follows:

1. Crude polymer precipitate in cold methanol
2. Recovered and soxhlet in Toluene product collected soluble in Toluene residue in thimble discarded.
3. Polymer precipitated in methanol
4. Recovered and soxhlet again against CHCl₃.
5. Polymer again filtered using Whatman Filter # 4 and ppt in cold methanol
6. Obtained polymer dried at room temperature over night.

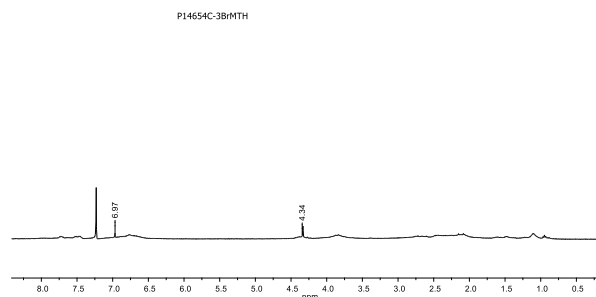
Characterization:

The molecular weight and polydispersity index (PDI) are obtained by size exclusion chromatography (SEC) in DMF using polystyrene as standard.

Solubility:

Polymer is soluble in THF, CHCl₃, and DMF.

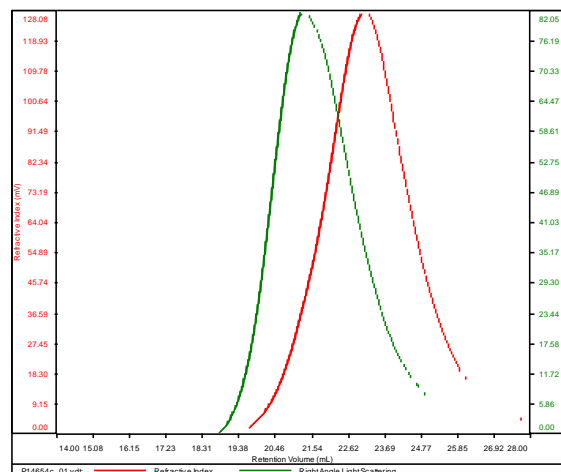
HNMR spectrum of the polymer:



SEC elugram of polymer:

P14654C

Conc	9.0897
dn/dc	0.1650
Solvent	DMF w 0.023M LiBr
Flow Rate	0.7000
Method	PS80k_2018-02-22-0000.vcm



Sample	Mn	Mw	Mp	Mw/Mn	IV
P14654c_01.vdt	32,308	75,366	35,080	2.333	0.0365