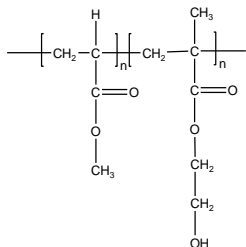


Sample Name: Poly (methyl acrylate–b–2-hydroxy ethyl methacrylate)

Sample #: P16025-2-MAHEMA

Structure:



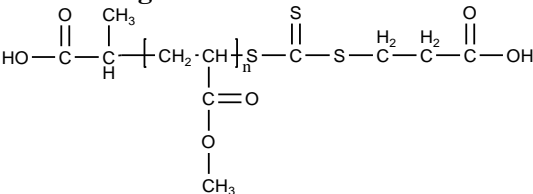
Composition:

$M_n \times 10^3$ MA–b–HEMA	PDI
21.0-b-3.0	2.4

Synthesis Procedure:

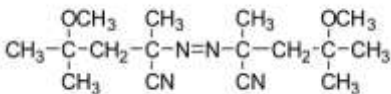
The polymer was synthesized by RAFT polymerization process by sequential addition of MA and HEMATMS monomer, followed by hydrolysis in acetone in the presence of trifluoroacetic acid.

RAFT Reagents:

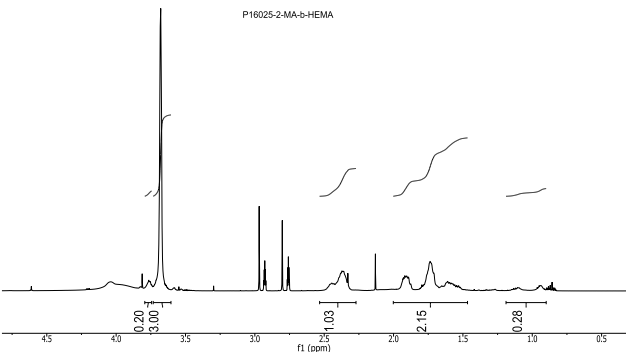


Initiator (V70):

2,2'-Azobis(4-methoxy-2,4-dimethylvaleronitrile)



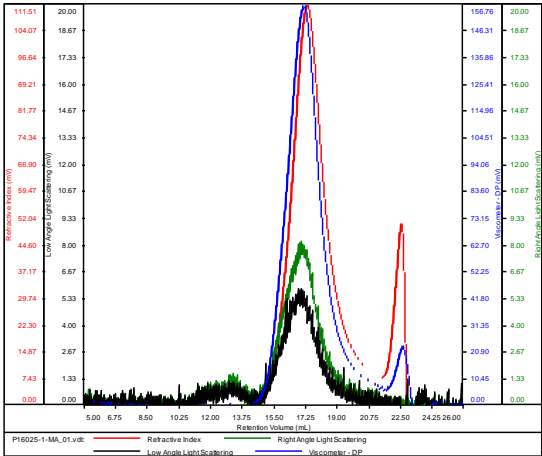
<sup>1</sup>HNMR of the MA-b-HEMA run in d7-DMF



SEC of the first block MA:

P16025-1-MA

Conc (mg/mL)	15.7166
dn/dc (mL/g)	0.0600
Method	PS80k-May-25-2016-0000.vcm
Solvent	DMF w/0.023M LiBr
Column	PSS

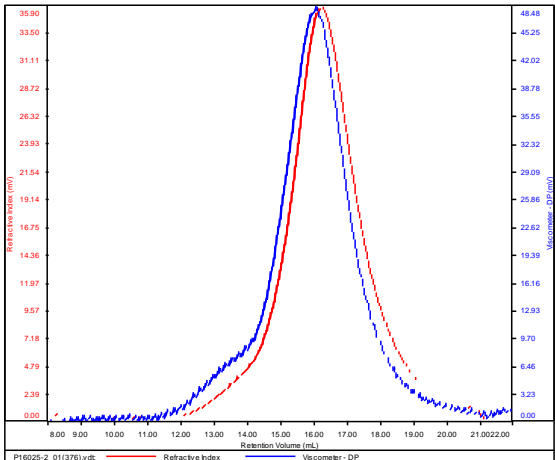


Sample	Mn	Mw	Mp	Mw/Mn	IV
P16025-1-MA_01.vdt	21,080	24,413	22,187	1.158	0.2482

SEC of the block copolymer:

P16025-2-MAHEMA

Conc (mg/mL)	8.0238
dn/dc (mL/g)	0.0700
Method	PS80k_December-2016-0004.vcm
Solvent	DMF w/0.023M LiBr
Column	PSS



Sample	Mn	Mw	Mp	Mw/Mn	IV
P16025-2_01(376).vdt	24,127	56,211	25,754	2.330	0.1709