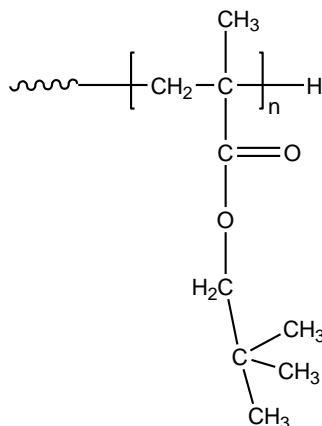


Sample Name: Poly (neopentyl methacrylate)

Sample #: P14796A-NPMA

Structure:



Composition:

$M_n \times 10^3$ (g/mol)	M_w/M_n
104.5	1.29

Synthesis procedure:

The polymer was synthesized by RAFT polymerization process.

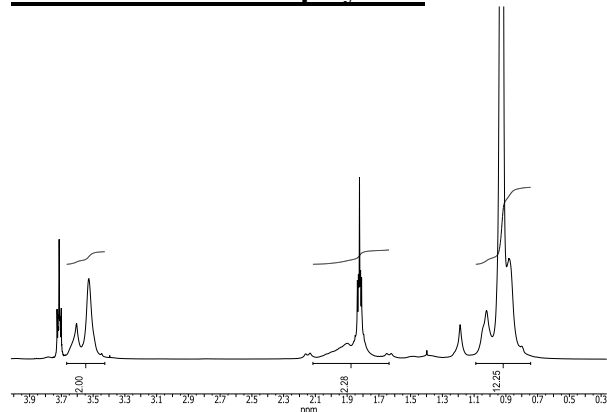
Characterization:

The molecular weight and polydispersity index (M_w/M_n) of poly (neopentyl methacrylate) were obtained by size exclusion chromatography (SEC).

Solubility:

Poly (neopentyl methacrylate) is soluble in THF, chloroform, toluene, and dioxane. The polymer precipitates from hexanes, methanol, and ethanol.

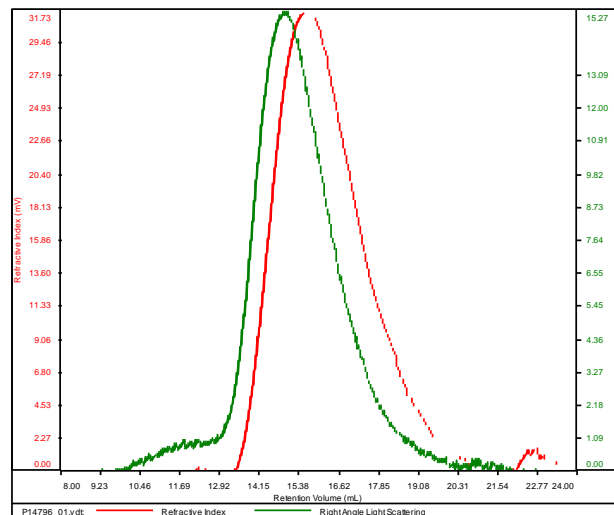
¹H NMR of the homopolymer:



SEC elugram of the homopolymer:

P14796-NPMA

Conc	5.7503
dn/dc	0.0650
Solvent	DMF w 0.023M LiBr
Flow Rate	0.7000
Method	PS80K_2018-02-22-0000.vcm



Sample	Mn	Mw	Mp	Mw/Mn	IV
P14796_01.vdt	104,357	135,071	127,800	1.294	0.2946