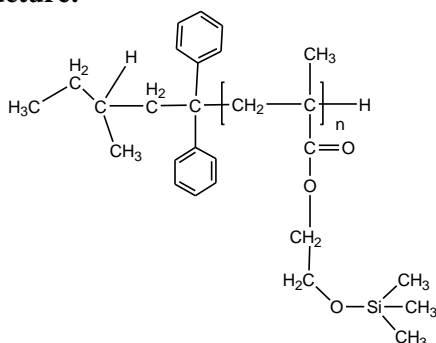


**Sample Name:** Poly (trimethyl siloxy 2-ethyl methacrylate)

**Sample #:** P40958-HEMATMS

**Structure:**



**Composition:**

Mn x 10 <sup>3</sup>	PDI
16.0	1.5

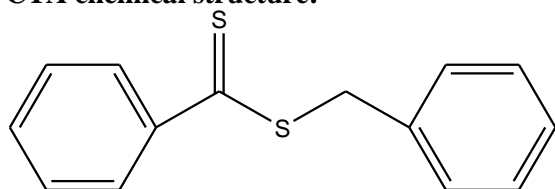
**Synthesis Procedure:**

Poly (trimethyl siloxy 2-ethyl methacrylate) is obtained by anionic polymerization of HEMA-TMS monomer.

**Characterization:**

The molecular weight and polydispersity index (PDI) obtained by size exclusion chromatography in DMF at 60°C using TDA Viscotek triple detector.

**CTA chemical structure:**



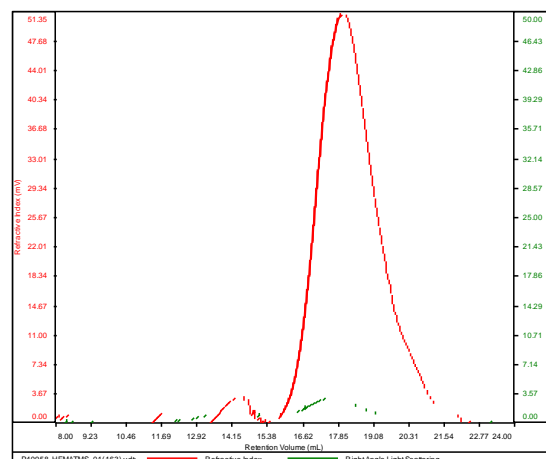
**Solubility:**

Polymer is soluble in Acetone, THF, DMF, etc.

**SEC elugram of Homopolymer in DMF:**

P40958-HEMATMS

Conc	7.2126
dn/dc	0.0650
Solvent	DMF w 0.023M LiBr
Flow Rate	0.7000
Method	PS80k_2018-02-22-0000.vcm



Sample	Mn	Mw	Mp	Mw/Mn	IV
P40958-HEMATMS_01(163).vdt	16,026	24,767	17,273	1.545	0.0911