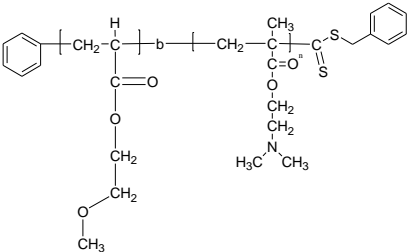


Sample Name: Poly (2-Metoxo ethylacrylate-b-
NN-Dimthylaminoethylmethacrylate)

Sample #: P41079-2MeOEA-DMAEMA

Structure:



Composition:

| | |
|---|------|
| Mn x 10 ³ 2MeOEA-b-DMAEMA | PDI |
| 15.0-b-8.0 | 1.28 |

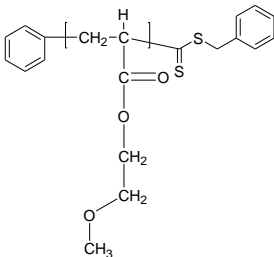
Synthesis Procedure:

The polymer was synthesized by RAFT process.

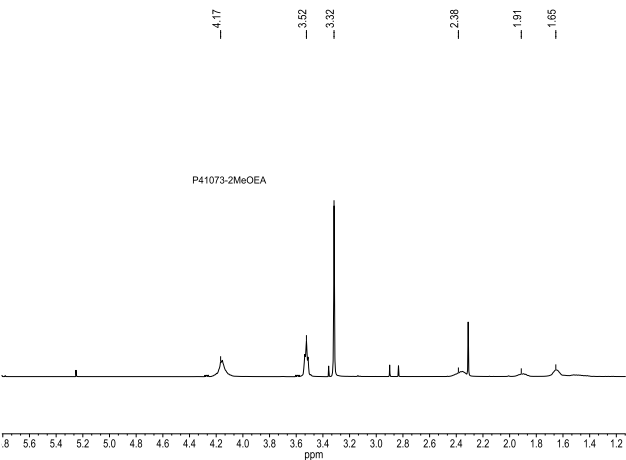
Characterization:

The product was characterized by size exclusion chromatography (SEC) and ¹H NMR.

Macroinitiator of P2MeoEtA:



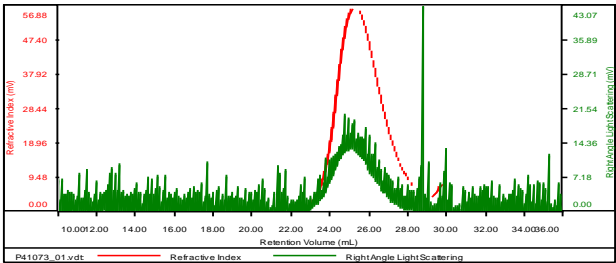
HNMR spectrum of the RAFT end terminated
P2MeOEA:



SEC elugram of the Sample lot# P41073-RAFT:

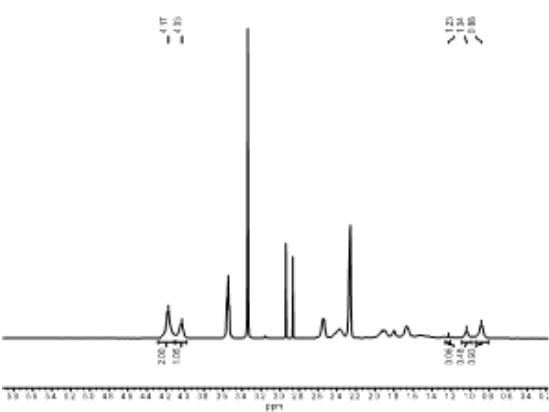
P41073-2MeOEA

| | |
|-----------------------|--------------------------|
| Concentration (mg/mL) | 3.6005 |
| Sample dn/dc (mL/g) | 0.1850 |
| Method File | PS80K-mar5-2018-0002.vcm |
| Column Set | 3x PL 1113-6300 |
| Solvent | THF |



| Sample | Mn (Da) | Mw (Da) | Mw/Mn | IV (dL/g) | Mp (Da) |
|---------------|---------|---------|-------|-----------|---------|
| P41073_01.vdt | 15,297 | 16,962 | 1.109 | 0.5685 | 16,258 |

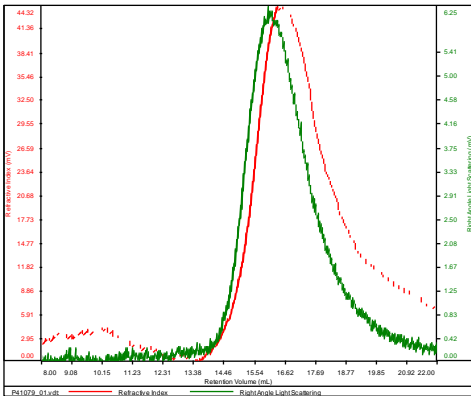
HNMR of Block Copolymer:



SEC elugram of the Sample:

P41079-2MeOEA-DMAEMA

| | |
|-----------|----------------------------|
| Conc | 8.2285 |
| dn/dc | 0.0750 |
| Solvent | DMF w 0.023M LiBr |
| Flow Rate | 0.7000 |
| Method | PS-80K_2018-04-02-0000.vcm |



| Sample | Mn | Mw | Mp | Mw/Mn | IV |
|---------------|--------|--------|--------|-------|--------|
| P41079_01.vdt | 23,381 | 29,611 | 35,261 | 1.266 | 0.2863 |