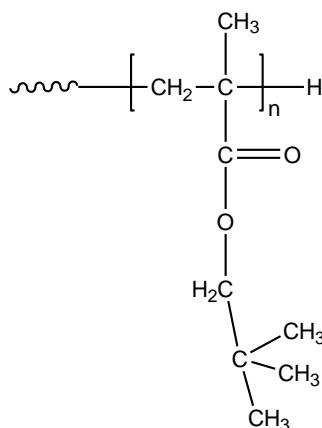


Sample Name: Poly (neopentyl methacrylate)

Sample #: P19487A-NPMA

Structure:



Composition:

$M_n \times 10^3$ (g/mol)	M_w/M_n
113.0	1.14

Synthesis procedure:

The polymer was synthesized by RAFT polymerization process.

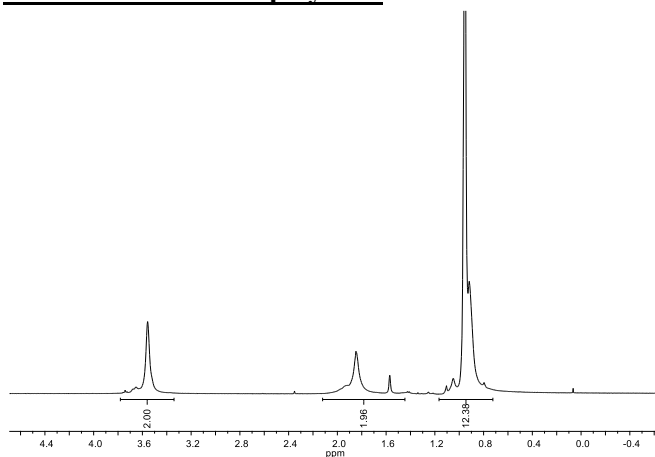
Characterization:

The molecular weight and polydispersity index (M_w/M_n) of poly (neopentyl methacrylate) were obtained by size exclusion chromatography (SEC).

Solubility:

Poly (neopentyl methacrylate) is soluble in THF, chloroform, toluene, and dioxane. The polymer precipitates from hexanes, methanol, and ethanol.

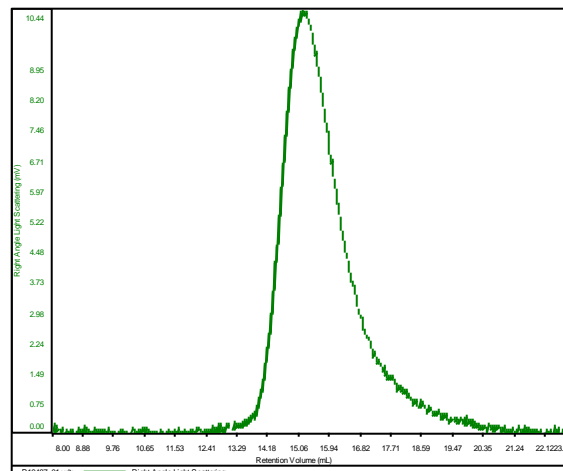
¹H NMR of the homopolymer:



SEC elugram of the homopolymer:

P19487A-NPMA

Conc	3.1423
dn/dc	0.0650
Solvent	DMF w 0.023M LiBr
Flow Rate	0.7000
Method	PS-80K_2018-04-02-0000.vcm



Sample	Mn	Mw	Mp	Mw/Mn	IV
P19487_01.vdt	112,795	128,326	133,135	1.138	0.2343