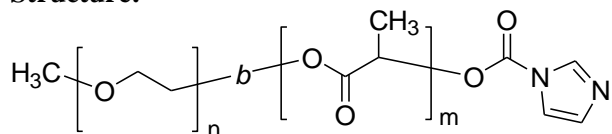


Sample Name: Imidazole end functionalized Poly (ethylene oxide -b- lactide) (DL form)

Sample #: P16321-mPEGLA-ID (DL form)

Structure:

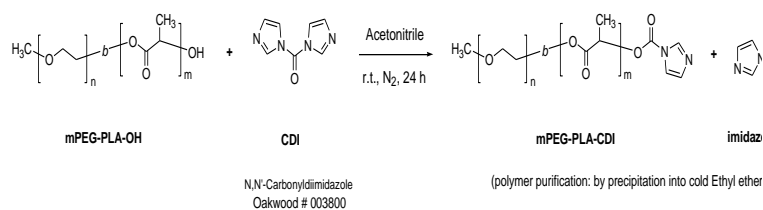


Composition:

Mn x 10 ³ PEO-b-PLA	PDI
2.0-b-1.4	1.13

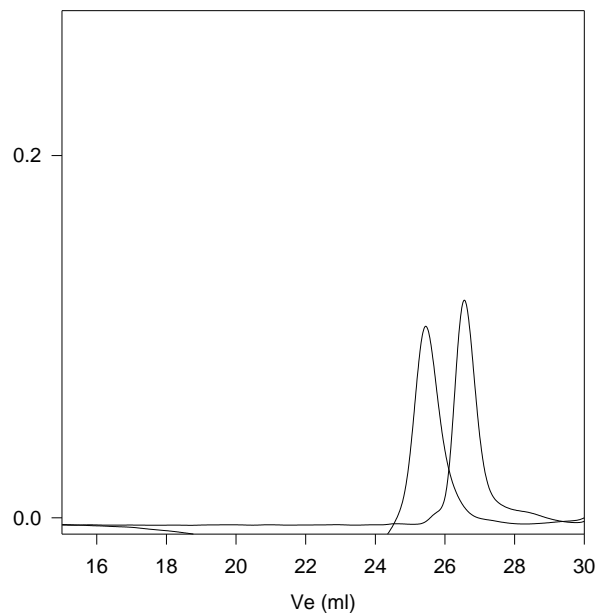
Synthesis Procedure:

The polymer is prepared as following scheme:



SEC of the block copolymer:

P16321- mPEG-LA-ID (DL form)



Size exclusion chromatography:

- Poly(ethylene glycol), $M_n=2000$, $M_w=2100$, $PI=1.06$
 - Block Copolymer PEO(2000)-b-PLA(1,400), $PI=1.13$
- Composition from ¹H NMR
Dp: EO(45 units)-b-LA (20 units)

Characterization:

The product was characterized by size exclusion chromatography (SEC), and ¹H NMR.

¹H-NMR Spectrum of the block copolymer EOLA-Imidazole

