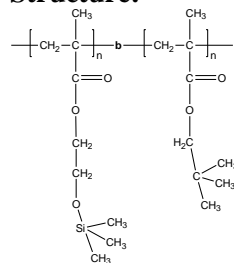


Sample Name: Poly (Trimethylsiloxy 2- ethyl methacrylate-b-Neopentyl methacrylate)

Sample #: P40878A-HEMATMSNPMA

Structure:



Composition:

Mn × 10 ³	PDI
HEMA-TMS-b-NPMA	
4.0-b-44.0	1.11
T _g for NPMA block:	119°C

Synthesis Procedure:

Polymer was synthesized by GTP polymerization process.

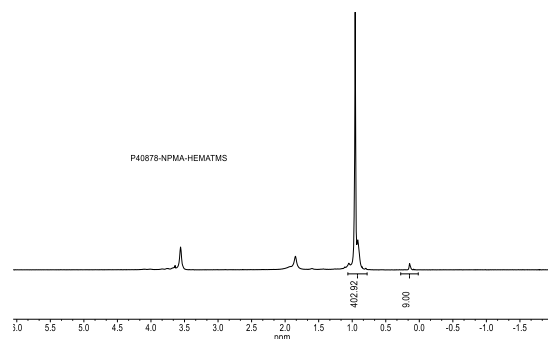
Characterization:

Polymer was analyzed by size exclusion chromatography (SEC) to obtain the molecular weight and polydispersity index (PDI). The final block copolymer composition was calculated from HNMR analysis.

Thermal analysis

Thermal analysis of the samples was carried out on a TA Q100 differential scanning calorimeter at a heating rate of 10°C/min. The midpoint of the slope change of the heat flow plot of the second heating scan was considered as the glass transition temperature (T_g).

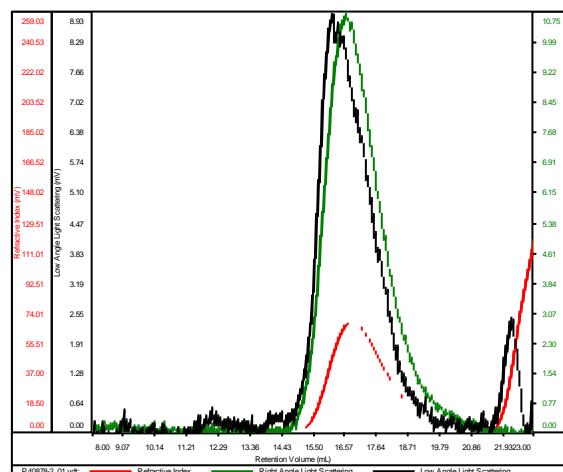
¹H NMR (500 MHz, in CdCl₃) of HEMATMS-NPMA:



SEC elugram of the polymer:

P40878-NPMA-HEMA

Conc	10.1607
dn/dc	0.0650
Solvent	DMF w 0.023M LiBr
Flow Rate	0.7000
Method	PS80k-04Dec2017-0000.vcm



Sample	Mn	Mw	Mp	Mw/Mn	IV
P40878-2_01.vdt	47,980	53,366	46,354	1.112	0.1527