

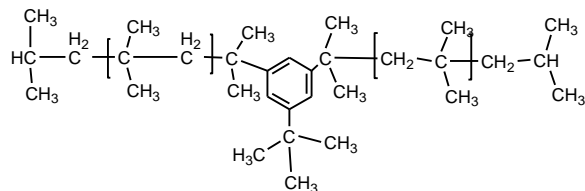
**Sample Name: Polyisobutylene**

**SEC profile of the Sample:**

**Sample #: P41367-IB**

**P41367-IB**

**Structure:**

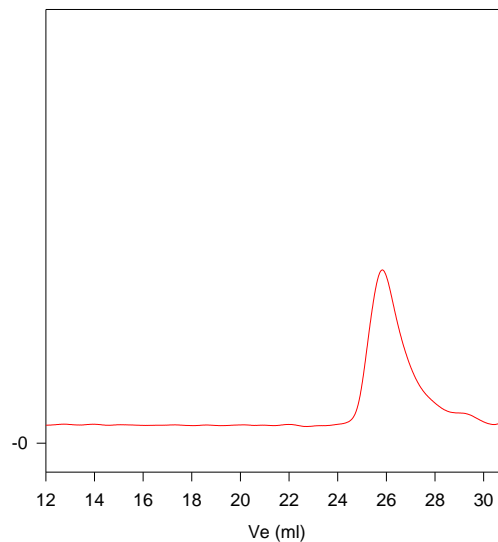
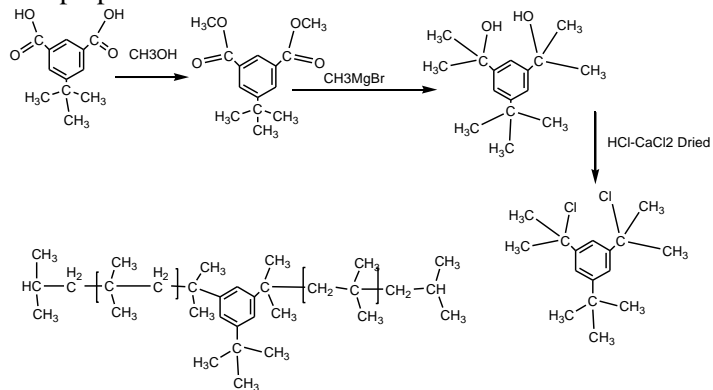


**Composition:**

Mn x 10 <sup>3</sup>	PDI
4.5	1.3

**Synthesis Procedure:**

The following reaction scheme shows how the product was prepared:



Size Exclusion Chromatogram of Polyisobutylene:

M<sub>n</sub>=4,500, M<sub>w</sub>=5,800, M<sub>w</sub>/M<sub>n</sub> = 1.3

**Characterization:**

The product was characterized by size exclusion chromatography (SEC) and <sup>1</sup>H NMR.

**Solubility:**

The polymer is soluble in THF, CHCl<sub>3</sub>, toluene, hexane.

**H NMR spectrum of the sample:**

