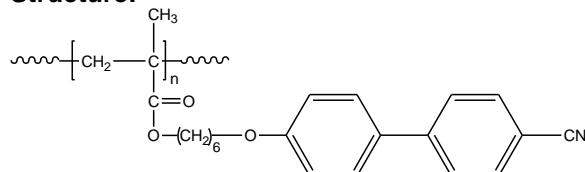


Sample Name:

Poly(6-(4'-cynaobiphenyl-4-yloxy)hexyl methacrylate)

Sample #: **P11002-4CNBPHMA**

Structure:

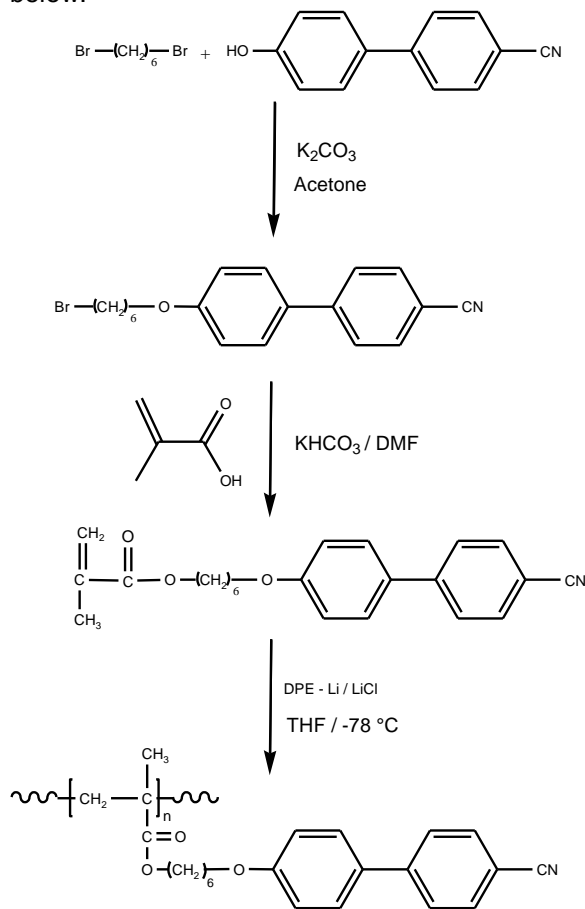


Composition:

Mn x 10 ³	PDI
16.0	1.14
Microstructure	Syndiotactic rich >80%

Synthesis Procedure:

Poly(6-(4'-cynaobiphenyl-4-yloxy)hexyl methacrylate) is obtained by living anionic polymerization of the monomer. The reaction scheme used for the polymer synthesis is shown below:



Characterization:

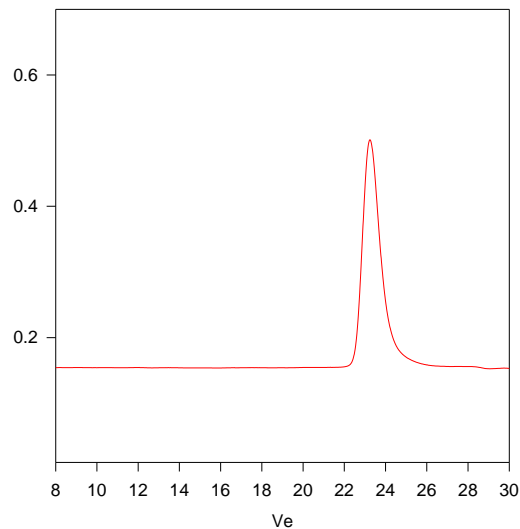
The molecular weight and polydispersity index (PDI) of Poly(6-(4'-cynaobiphenyl-4-yloxy)hexyl methacrylate) are obtained by size exclusion chromatography.

Solubility:

Poly(6-(4'-cynaobiphenyl-4-yloxy)hexyl methacrylate) is soluble in THF, acetone, dichloromethane and chloroform but insoluble in hexane, ethanol and water.

SEC of Homopolymer:

P11002-4CNBPHMA



Size Exclusion Chromatography of:
Poly[6-[4-(4-cyanophenyl)phenoxy]hexyl methacrylate]

M_w = 16,000 M_w: 18,200, M_w/M_n = 1.14

