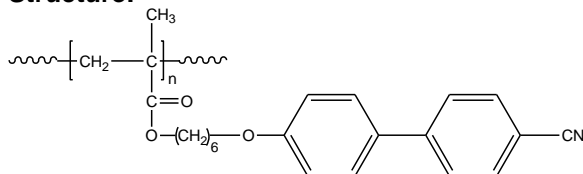


Sample Name:

**Poly(6-(4'-cynaobiphenyl-4-yloxy)hexyl methacrylate)**

Sample #: **P11003-4CNBPHMA**

**Structure:**

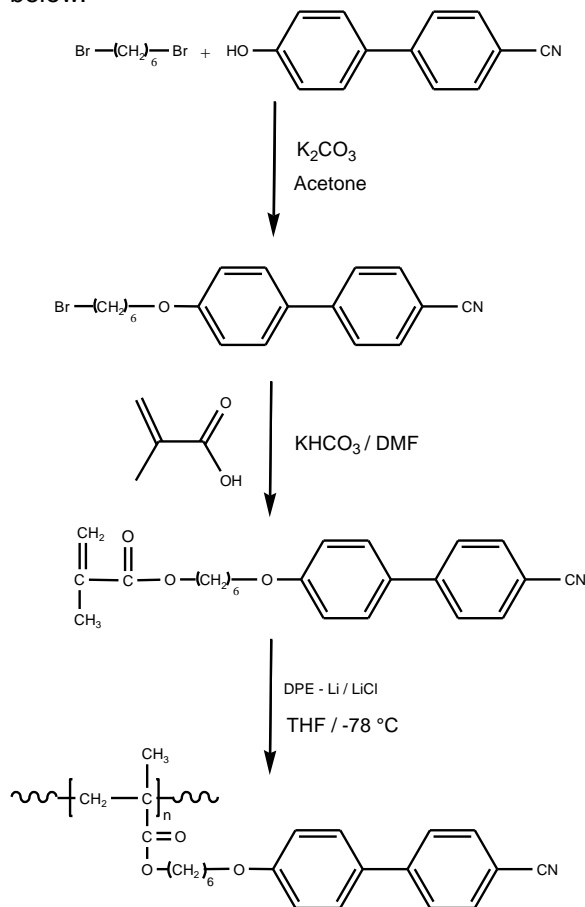


**Composition:**

Mn x 10 <sup>3</sup>	PDI
17.0	1.19
Microstructure	Syndiotactic rich > 80%

**Synthesis Procedure:**

Poly(6-(4'-cynaobiphenyl-4-yloxy)hexyl methacrylate) is obtained by living anionic polymerization of the monomer. The reaction scheme used for the polymer synthesis is shown below:



**Characterization:**

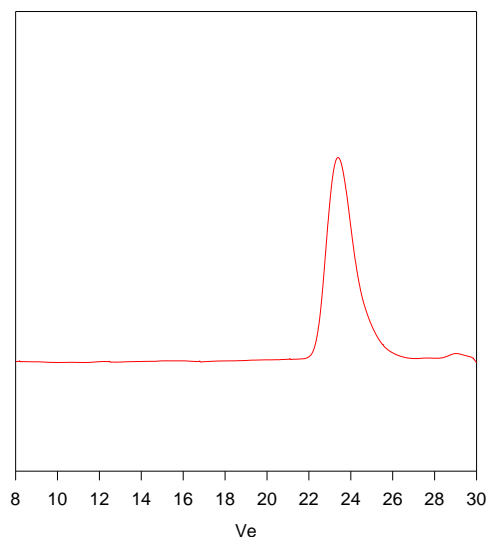
The molecular weight and polydispersity index (PDI) of Poly(6-(4'-cynaobiphenyl-4-yloxy)hexyl methacrylate) are obtained by size exclusion chromatography.

**Solubility:**

Poly(6-(4'-cynaobiphenyl-4-yloxy)hexyl methacrylate) is soluble in THF, acetone, dichloromethane and chloroform but insoluble in hexane, ethanol and water.

**SEC of Homopolymer:**

**P11003-4CNBPHMA**



Size Exclusion Chromatography of:  
Poly[6-[4-(4-cyanophenyl)phenoxy]hexyl methacrylate]

M<sub>w</sub> = 17,000 Mw: 20,000, M<sub>w</sub>/M<sub>n</sub> = 1.18

