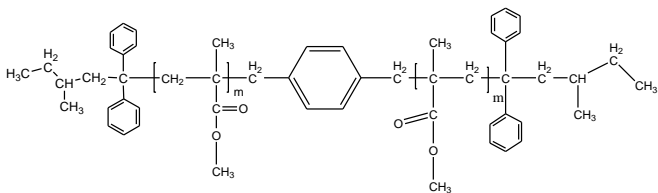


**Sample Name:** Poly (methyl methacrylate), with p-xylene in center of polymer chain

**Sample #:** P41600-MMA-Xylene-MMA

**Structure:**



**Composition:**

Mn x 10 <sup>3</sup>	PDI
4.8	1.07

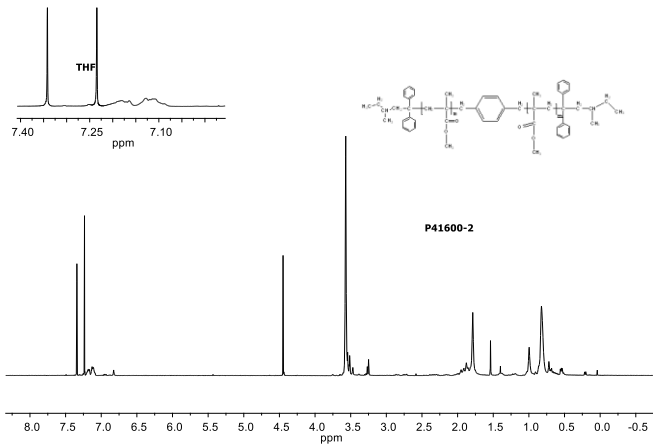
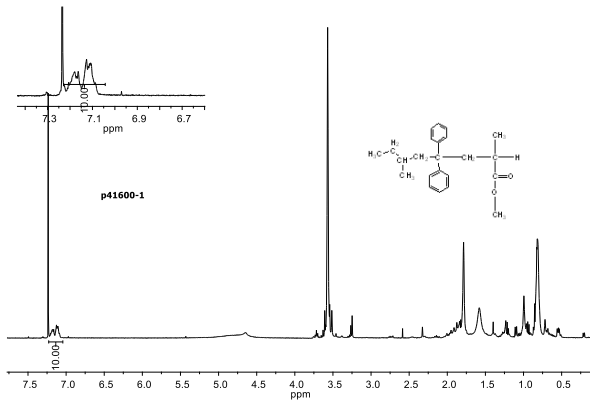
**Synthesis Procedure:**

The polymer was synthesized by anionic polymerization process.

**Characterization:**

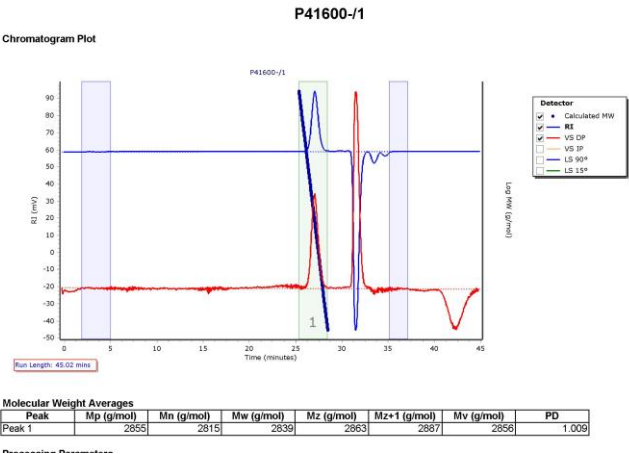
The polymer was characterized by size exclusion chromatography (SEC) and <sup>1</sup>H NMR.

**<sup>1</sup>H NMR spectrum of polymer:**



**SEC elugram of the Sample:**

Agilent GPC/SEC Software



Agilent GPC/SEC Software

