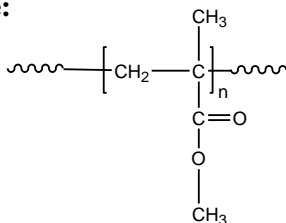


Sample Name: Poly (methyl methacrylate)
Different microstructure

Sample #: P41810-MMA

Structure:



Composition:

Mn x 10 ³	PDI
44.5	1.46

Syndio : Hetero : Isotactic	58 : 34 : 8
-----------------------------	-------------

Synthesis Procedure:

Poly (methyl methacrylate) is obtained by controlled radical polymerization or GTP process.

Characterization:

Tacticity of the polymer was determined by ¹H NMR. The molecular weight and polydispersity index (PDI) were obtained by size exclusion chromatography (SEC) in THF. SEC analysis was performed on a Varian liquid chromatograph equipped with refractive and UV light scattering detectors. Three SEC columns from Supelco (G6000-4000-2000 HXL) were used with triple detectors from Viscotek Co.

Thermal analysis of the samples was carried out using a differential scanning calorimeter (TA Q100) at a heating rate of 10°C/min. The inflection glass transition temperature (T_g) of the sample has been considered.

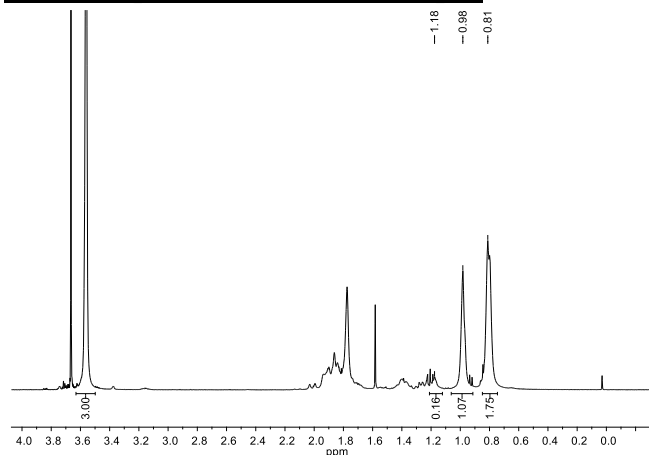
Solubility:

The polymer is soluble in THF, CHCl₃, toluene and dioxane. The polymer precipitates from cold methanol and ethanol.

T_g vs MW for selected atactic PMMA:

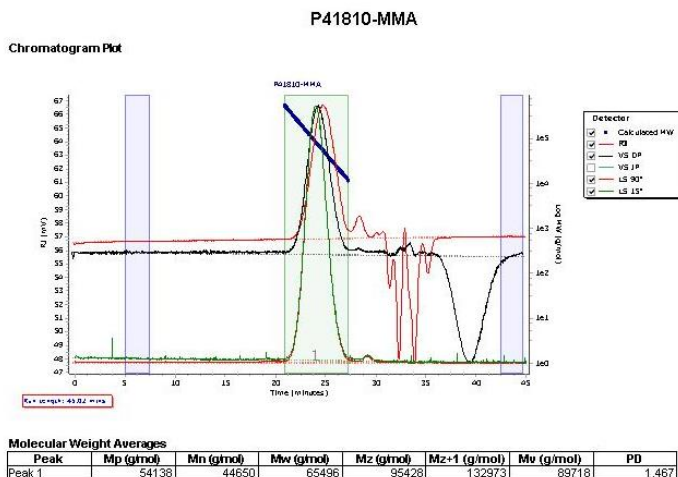
M _n × 10 ³	T _g (°C)	M _n × 10 ³	T _g (°C)
1.1	51	36	98
2.5	76	55	111
5.0	91	70	107
15	101	127	115
19	107	230	114
29	96	700	121

¹H NMR spectrum of PMMA Sample:



SEC elugram of PMMA homopolymer:

Agilent GPC/SEC Software



DSC thermogram:

T_g of atactic poly methyl methacrylate as function of molecular weight

