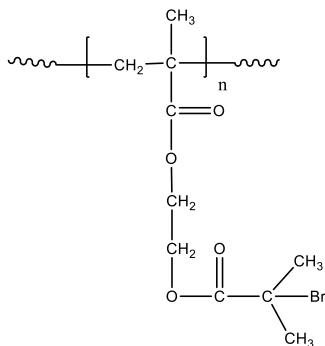


Sample Name:

**Poly(2-[2-bromoisobutyryloxy]ethyl methacrylate)**

Sample #: **P13092-BrIEMA**

**Structure:**



**Composition:**

Mn × 10 <sup>3</sup> BrIEMA	PDI
27.5	1.37

**Synthesis Procedure:**

Poly(2-bromoisobutyryl ethylmethacrylate) is synthesized by living anionic polymerization.

**Characterization:**

The molecular weight and polydispersity of polymer was determined by SEC equipped with refractive and light scattering detectors using DMF as eluent in the presence of LiBr (0.023M).

**Thermal analysis:**

Thermal analysis of the samples was carried out on a TA Q100 differential scanning calorimeter at a heating rate of 10°C/min. The midpoint of the slope change of the heat flow plot of the second heating scan was considered as the glass transition temperature (T<sub>g</sub>).

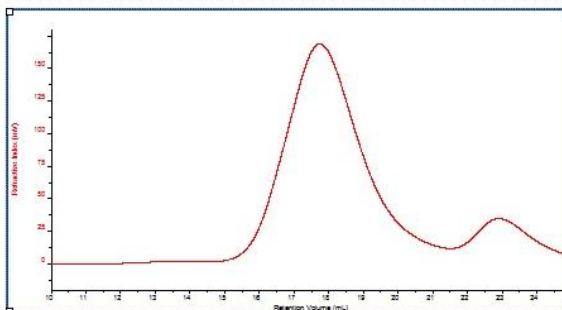
**Solubility:**

Poly( 2-(bromoisobutyryl)ethylmethacrylate) is soluble in THF, DMF and CHCl<sub>3</sub>. It precipitates from methanol/water.

**SEC of the Polymer:**

**P13092**

dn/dc	0.0650
Flow	0.7000
Solvent	DMF with LiBr
Method	PSS column-PMMA60K-Jan3-2019-0002.vcm



Sample	Mn	Mw	Mz	IV	Mw/Mn
P13092 1 201	27,680	37,885	131,026	0.0703	1.369