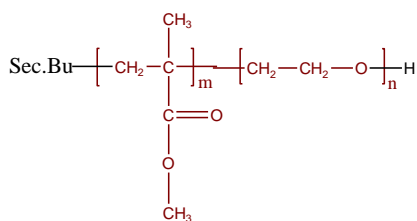


Sample Name:

Poly (Ethylene oxide-b- methyl methacrylate)

Sample #: **P8087-EOMMA**

Structure:

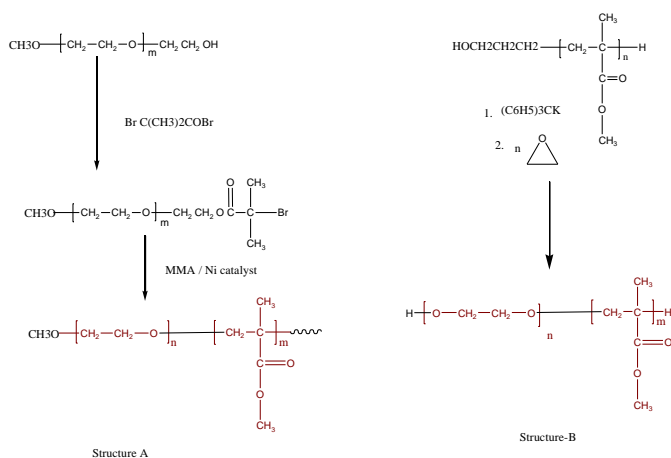


Composition:

| | |
|-----------------------------------|------|
| Mn x 10 ³ PEO-b-MMA | PDI |
| 1.0-b-11.0 | 1.42 |

Synthesis Procedure:

Poly (Ethylene oxide-b- methyl methacrylate) is prepared by different routes. The scheme of the reactions is illustrated below:



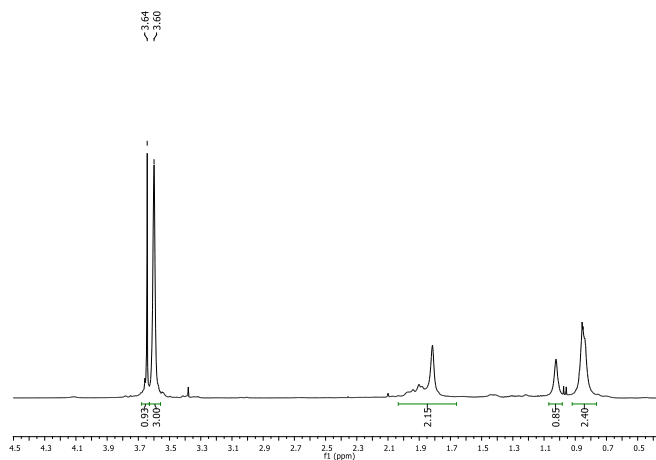
Characterization:

The product was characterized by size exclusion chromatography (SEC) and ¹H NMR.

Solubility:

Poly(ethylene oxide -b- MMA) is soluble in CHCl₃, THF, and toluene. The polymer precipitated out from hexane.

¹H-NMR Spectrum of the block copolymer:



SEC elugram of the block copolymer:

