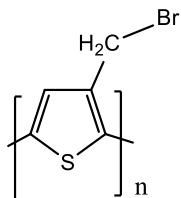


**Sample Name:**

**Poly(3-bromomethylthiophene-2,5-diyl)**

**Sample #:** P42158-3BrMTH

**Structure:**



**Composition:**

Mn x 10 <sup>3</sup>	PDI	HT
14.5	2.1	HT (head to tail)

**Purification of polymer:**

Purification was carried out extensively as follows:

1. Crude polymer ppt in cold methanol
2. Recovered and soxhlet in Toluene product collected soluble in Toluene residue in thimble discarded.
3. Polymer precipitated in methanol
4. Recovered and soxhlet again against CHCl<sub>3</sub>.
5. Polymer again filter using Whatman Filter # 4 and ppt in cold methanol
6. Obtained polymer dried at room temperature overnight.

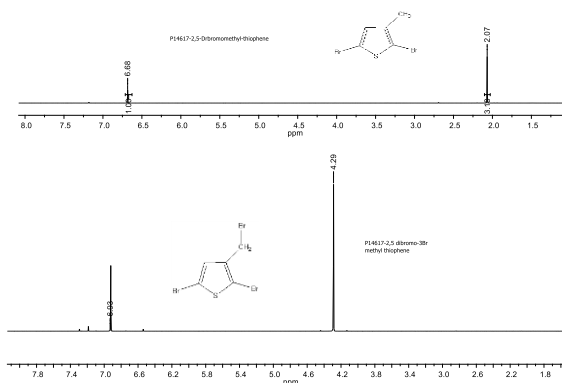
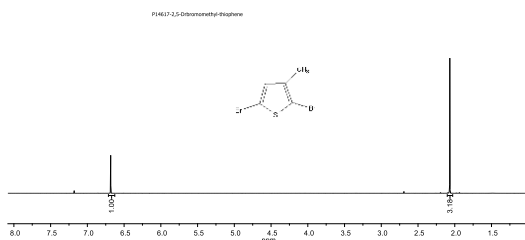
**Characterization:**

The product was characterized by size exclusion chromatography (SEC) and <sup>1</sup>H NMR.

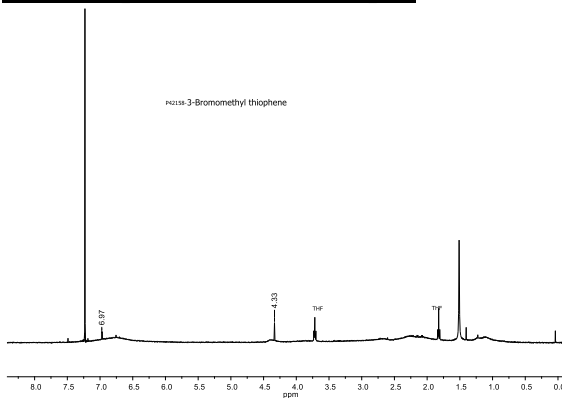
**Solubility:**

Polymer is soluble in CHCl<sub>3</sub> and THF.

## NMR of Monomer 2,5 dibromomethyl thiophene

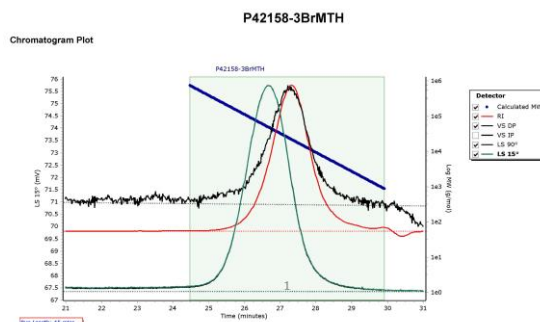


**H NMR spectrum of the Sample:**



**SEC profile of the Sample:**

Agilent GPC/SEC Software



Peak	Mp (g/mol)	Mn (g/mol)	Mw (g/mol)	Mz (g/mol)	Mz+1 (g/mol)	Mx (g/mol)	PD
Peak 1	22065	14676	31172	79957	232363	54470	2.124