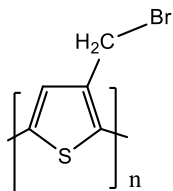


**Sample Name:**

**Poly(3-bromomethylthiophene-2,5-diyl)**

**Sample #: P42157-3BrMTh**

**Structure:**



**Composition:**

Mn x 10 <sup>3</sup>	PDI	HT
10.5	1.45	HT (head to tail)

**Purification of polymer:**

Purification was carried out extensively as follows:

1. Crude polymer ppt in cold methanol
2. Recovered and soxhlet in Toluene product collected soluble in Toluene residue in thimble discarded.
3. Polymer precipitated in methanol
4. Recovered and soxhlet again against CHCl<sub>3</sub>.
5. Polymer again filter using Whatman Filter # 4 and ppt in cold methanol
6. Obtained polymer dried at room temperature over night.

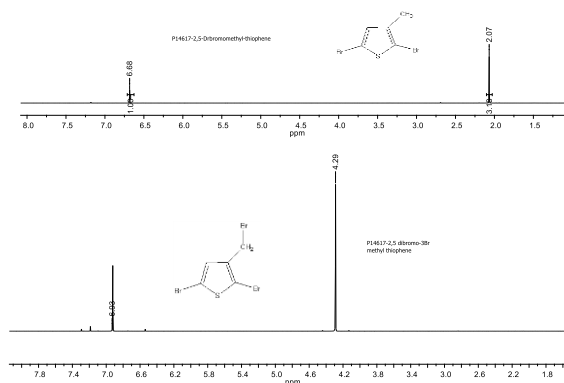
**Characterization:**

The product was characterized by size exclusion chromatography (SEC) and <sup>1</sup>H NMR.

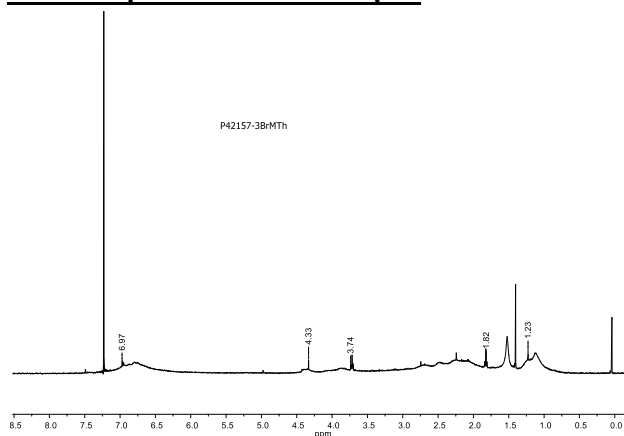
**Solubility:**

Polymer is soluble in CHCl<sub>3</sub> and THF.

**NMR of Monomer 2,5 dibromomethyl thiophene:**



**H NMR spectrum of the Sample:**



**SEC profile of the polymer:**

Agilent GPC/SEC Software

