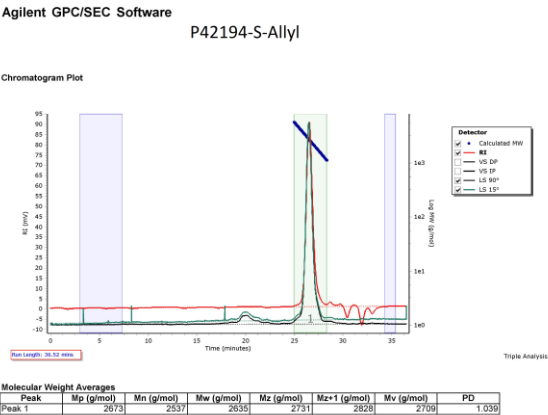




**SEC elugram of the Ally terminated Poly Styrene:**



GPC of the diblock copolymer carried out in Toluene the elution volume was higher than its polystyrene allyl precursor. The Mw/MN is increased from 1.03 to 1.08 HNMR calculate the composition which is comparable to its yield of the polymer.

**SEC elugram of the Sample:**

