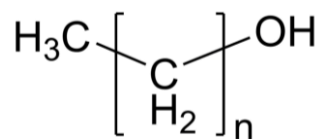


Sample Name: Poly(methylene), ω -hydroxy-terminated

Sample #: P60195-MOH

Structure:

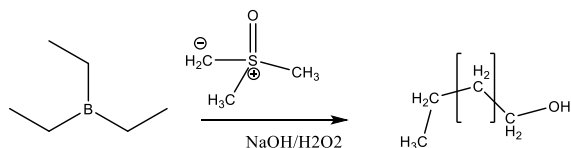


Composition:

$\text{Mn} \times 10^3$	PDI
1.0	1.2

Synthesis:

The following reaction scheme shows how the product was prepared:



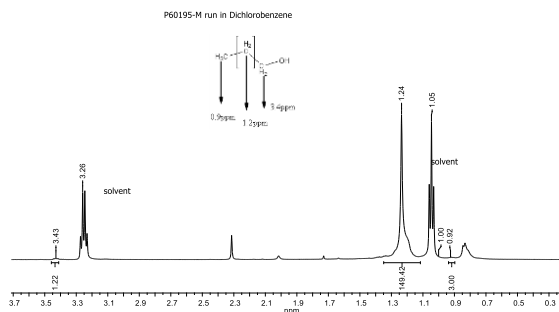
Characterization:

The molecular weight and polydispersity index (PDI) are obtained by size exclusion chromatography (SEC) in Toluene at 70°C. SEC analysis was performed on a Varian liquid chromatograph equipped with refractive and UV light scattering detectors. Three SEC columns from Supelco (G6000-4000-2000 HXL) were used with triple detectors from Viscotek Co.

Solubility:

Polymethylene is soluble in hot toluene and hot xylene. The polymer is insoluble in hexane, methanol and ethers.

HNMR run in d5 Chlorobenzene:



SEC profile of the Polymer:

