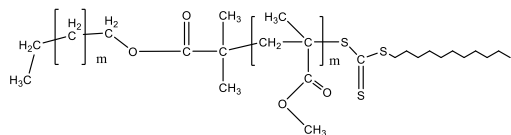


Sample Name:
Poly(methylene)-b-poly(methyl methacrylate)

Synonym: *Poly (ethylene-block-methyl methacrylate)*

Sample #: **P42316-M-MMA**

Structure:



Composition:

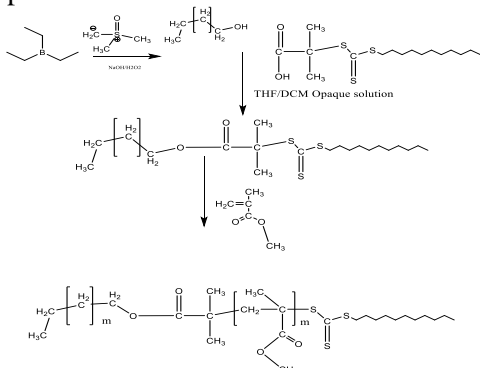
$M_n \times 10^3$ (g/mol) [M-b-MMA]	M_w/M_n
1.5–188.0	1.7

Thermal properties:

Melting point, T_m :	104 °C
------------------------	--------

Synthesis Procedure:

The following reaction scheme shows how the product was prepared:



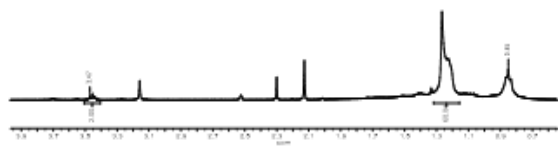
Characterization:

The product was analyzed using proton NMR, size exclusion chromatography (SEC), and DSC methods.

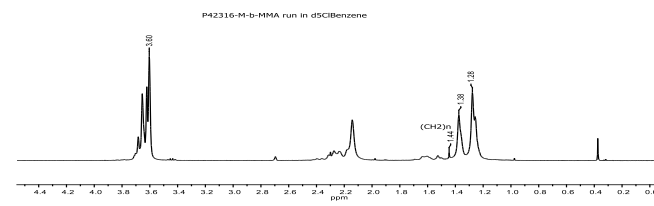
Solubility:

Polymer is soluble in hot toluene but becomes opaque once solution is cooled down to room temperature.

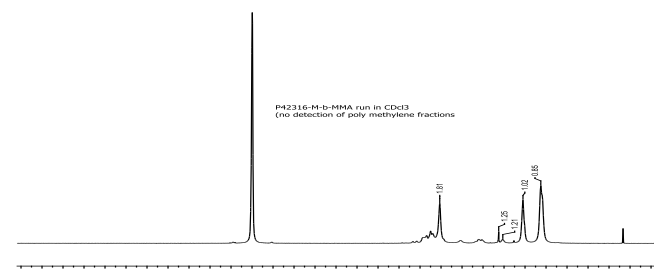
^1H NMR spectrum of the 1st block:



^1H NMR spectrum of the diblock copolymer in chlorobenzene- d_5 :

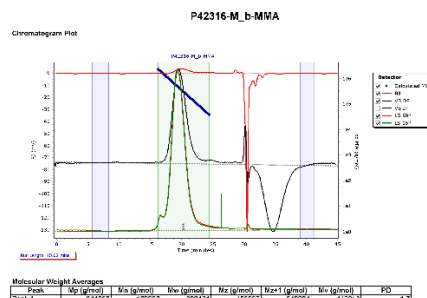


^1H NMR spectrum of the diblock copolymer in cdCl_3 :



SEC elugram of the diblock copolymer in THF at 35 °C:

Agilent GPC/SEC Software



DSC thermogram of the diblock polymer (2nd heating scan, 10°C/min):

