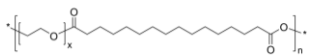


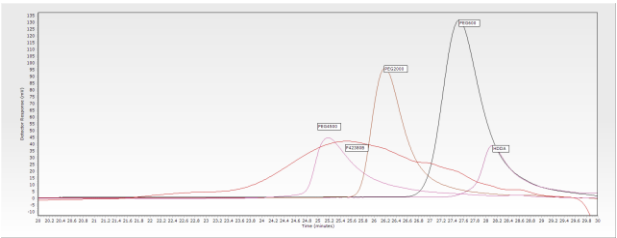
Sample Name: Poly(PEG-hexadeca-di-oate); polyester based on poly(ethylene glycol) and hexadecanedioic acid

Sample #: P42380B-EGHDDA

Structure:



SEC profile carried out in THF of Lot# P42380B:



Composition:

$M_n \times 10^3$	Mw/Mn
3.1	1.5

of PEG average units 3.3
of Diacid average units 4.0
Physical appearance Ivory color soft at room temperature,

Characterization:

The product was characterized by size exclusion chromatography (SEC) and ¹H NMR.

¹H NMR spectrum of Polymer (400 MHz, DMSO):

