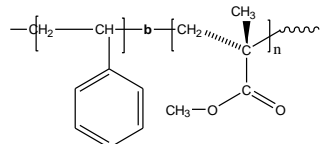


**Sample Name: Poly(styrene-b-methyl methacrylate)**  
**(PMMA iso rich contents >95%)**

**Sample #: P3886B-SMMAiso**

**Structure:**

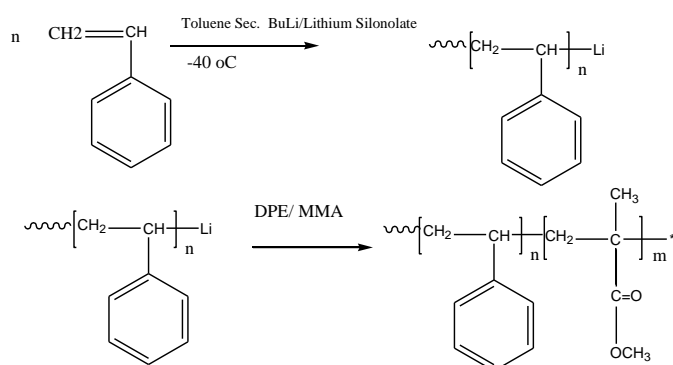


**Composition:**

Mn x 10 <sup>3</sup> S-b-MMA	PDI
16.0-b-25.0	1.8

**Synthesis Procedure:**

Poly(styrene-b-butadiene) is prepared by living anionic polymerization with sequence addition of styrene followed by methyl methacrylate (MMA). The scheme of the reaction is illustrated below:



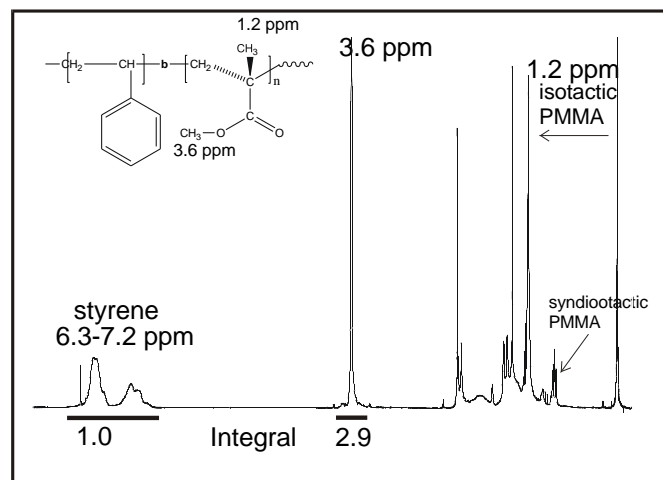
**Characterization:**

An aliquot of the anionic polystyrene block was terminated before addition of MMA and analyzed by size exclusion chromatography (SEC) to obtain the molecular weight and polydispersity index (PDI). The final block copolymer composition was calculated from <sup>1</sup>H-NMR spectroscopy by comparing the peak area of the poly(methyl methacrylate) protons (eg. –OCH<sub>3</sub> at 3.6ppm) with the of aromatic protons of polystyrene at 6.3-7.2 ppm. Copolymer PDI is determined by SEC.

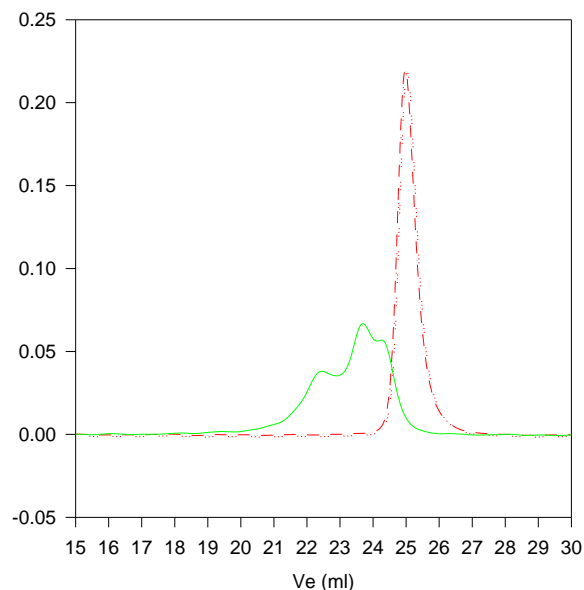
**Solubility:**

Poly(styrene-b-methyl methacrylate) is soluble in THF, toluene, dioxane and CHCl<sub>3</sub>. This polymer readily precipitates from methanol, ethanol, hexanes and water.

**<sup>1</sup>H-NMR Spectrum of P3886B-SMMAiso:**



**SEC of Sample P3886B-SMMAiso:**



Size Exclusion chromatography of  
poly(styrene-b-isotactic methyl methacrylate):  
— Polystyrene, M<sub>n</sub>=16000, M<sub>w</sub>=17000, PI=1.08