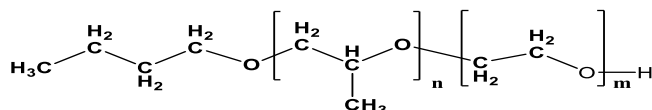


Sample Name:  
**Poly(Propylene oxide-b-Ethyleneoxide)**

Sample #: **P42430B-POEO**

**Structure:**



**Composition:**

$M_n \times 10^3$ (g/mol) PO-b-EO	$M_w/M_n$
3.1-b-9.5	1.13

**Synthesis Procedure:**

Poly(Propylene oxide-ethylene oxide) diblock copolymer was prepared by living anionic polymerization.

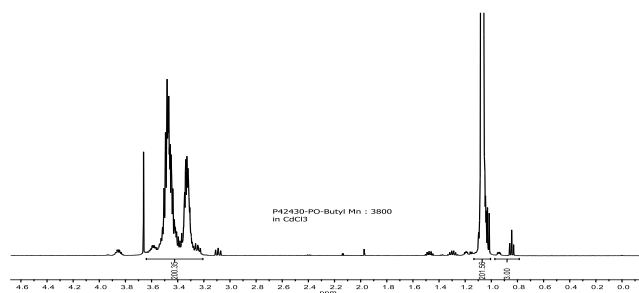
**Characterization:**

The product was characterized by size exclusion chromatography (SEC) and  $^1\text{H-NMR}$ .

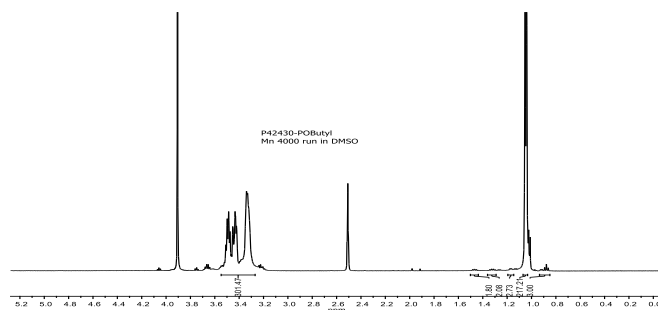
**Solubility:**

Poly(ethylene oxide-b-propylene oxide) is soluble in chloroform, THF, methanol and ethanol. The polymer precipitates from hexane and ether.

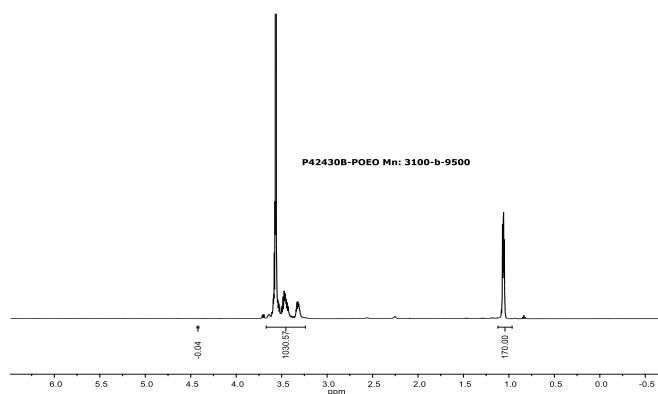
**$^1\text{H-NMR}$  spectrum of lot# P42430-PO-OBu in  $\text{CdCl}_3$  500MHZ:**



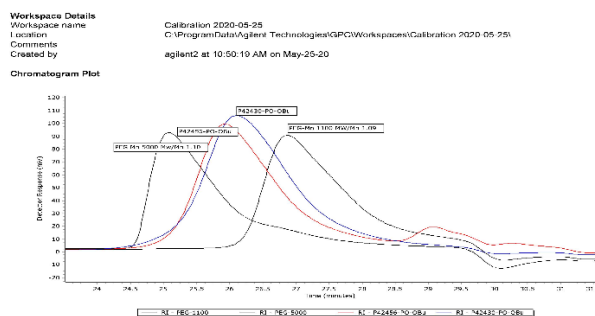
**$^1\text{H-NMR}$  spectrum of lot# P42430-PO-OBu in DMSO 500MHZ:**



**$^1\text{H-NMR}$  spectrum of lot# P42430B-POEO in  $\text{CdCl}_3$ :**



**SEC elugram of lot#P42430-PO-OBu:**



**SEC elugram of P42430B-POEO:**

