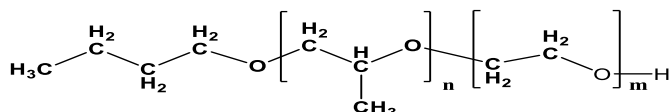


Sample Name:

**Poly(propylene oxide-b-ethyleneoxide)**

Sample #: **P42430A-POEO**

**Structure:**



**Composition:**

$M_n \times 10^3$ (g/mol) PO-b-EO	$M_w/M_n$
3.1-b-13.0	1.07

**Synthesis Procedure:**

Poly(Propylene oxide-ethylene oxide) diblock copolymer was prepared by living anionic polymerization.

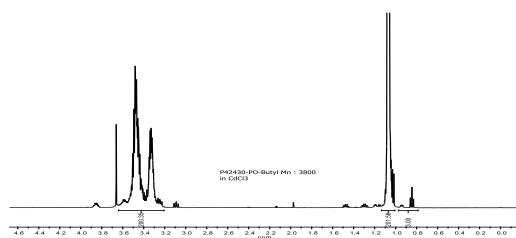
**Characterization:**

The product was characterized by size exclusion chromatography (SEC) and <sup>1</sup>H NMR analysis.

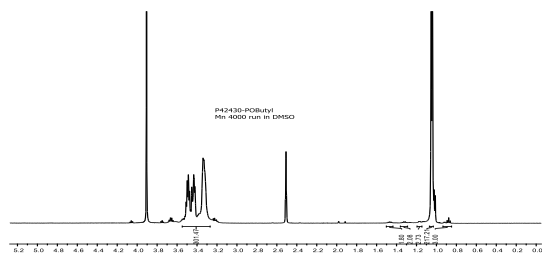
**Solubility:**

Poly(ethylene oxide-b-propylene oxide) is soluble in chloroform, THF, methanol and ethanol. The polymer precipitates from hexane and ether.

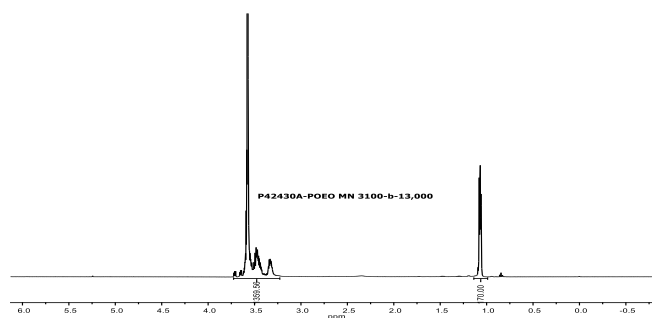
**<sup>1</sup>H NMR spectrum of P42430-PO-OBu (500 MHz, CDCl<sub>3</sub>):**



**<sup>1</sup>H NMR spectrum of P42430-PO-OBu (500 MHz, DMSO):**



**<sup>1</sup>H NMR spectrum of sample:**



**SEC chromatograms:**

