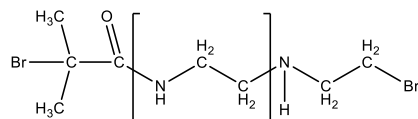


Sample Name: Poly(ethylene imine)

Sample #: P42555D-EI

Structure:

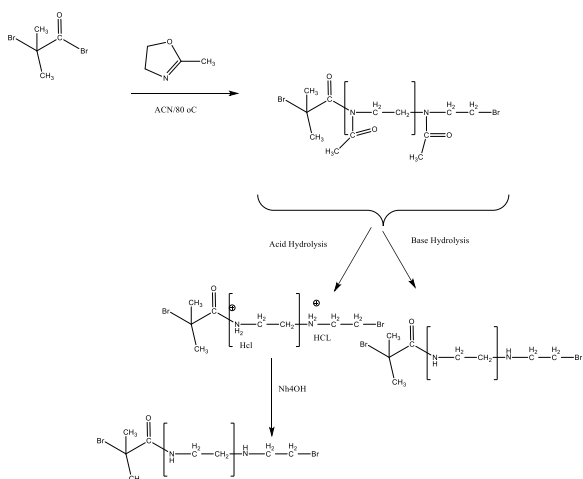


Composition:

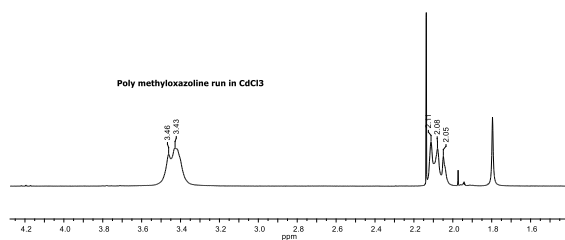
Mn x 10 ³	PDI
13.0	1.26
Color of the polymer	Ivory to brown

Synthesis Procedure:

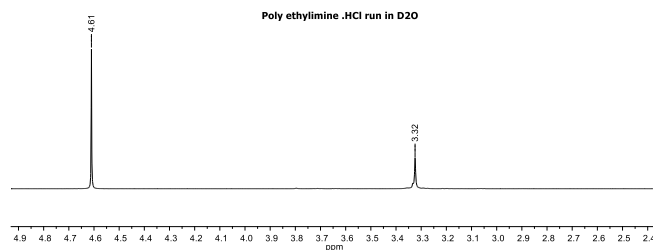
Poly(2-methyl oxazoline) is prepared by cationic process. This was followed by an acid hydrolysis to obtain poly(ethylene imine).



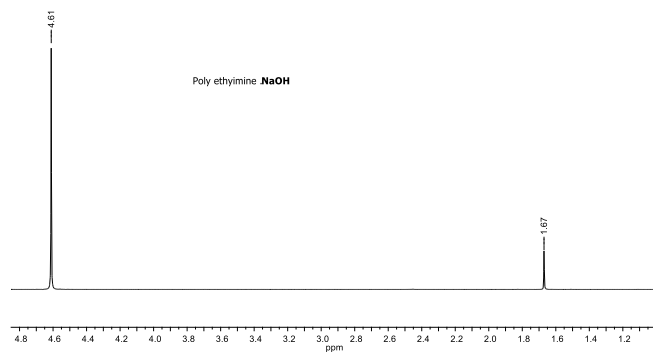
¹H-NMR Spectrum of the poly methyloxazoline run in CdCl₃:



¹H-NMR Spectrum of the polymer (PEI.HCl):



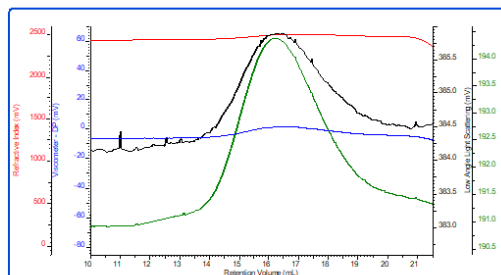
¹H-NMR Spectrum of the polymer (PEI.NaOH):



SEC profile run in DMF:

P42555D-MEOXZ

dn/dc	0.0840
Flow Rate	0.7000
Solvent	DMF with LiBr
Method	PSS column-PMMA60K-Jan3-2019-0011.vcm



Sample	Mn	Mw	Mp	Mw/Mn
P42555D-MEOXZ_1_2	25,658	31,971	31,851	1.246

After Hydrolysis : Poly ethyleneimine Mn 13,000