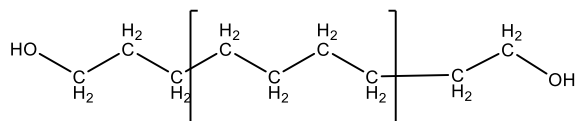


**Sample Name:**  
 $\alpha,\omega$ -dihydroxy terminated Polyethylene

**Sample #:** P42623-E2OH

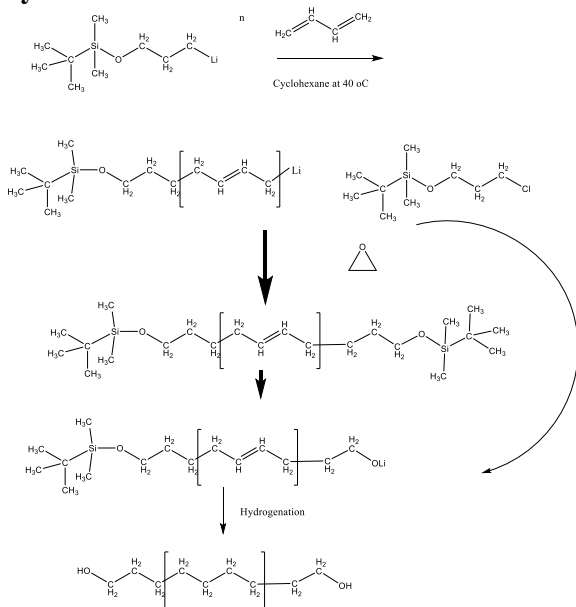
**Structure:**



**Composition:**

Mn x 10 <sup>3</sup>	PDI
3.0	1.01
Physical appearance	Honey like However PE-OH monohydroxy terminated Mn of 3000 is solid powder at room temperature

**Synthesis Route:**



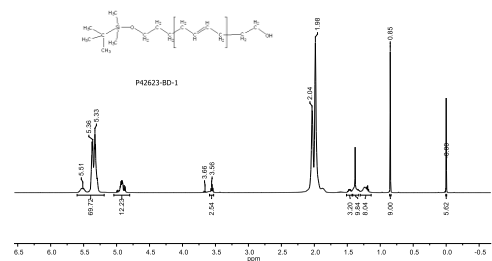
**Characterization:**

The product was characterized by size exclusion chromatography (SEC) and <sup>1</sup>H-NMR at room temperature and at 80 °C in Toluene.

**Solubility:**

Polyethylene is soluble in hot toluene (also at room temperature) and hot xylene. Such low molecular weight polymer was found also soluble in THF at room temperature.

**<sup>1</sup>H-NMR spectrum of polymer tBudimethylSiloxyl-PBD-OH:**



SEC elugram of Sample:

