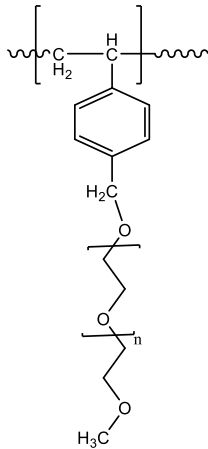


Sample Name: **Polystyrene Graft Poly ethylene glycol methylether (Mw 550)**

Sample #: **P42916-SEOcomb**

Structure:



Composition:

Mn x 10 ³ (Total)	Mn x 10 ³ (mPEG)	Mw/Mn
39.0	0.55	1.02

Synthesis Procedure:

The polymer was synthesized by RAFT polymerization process.

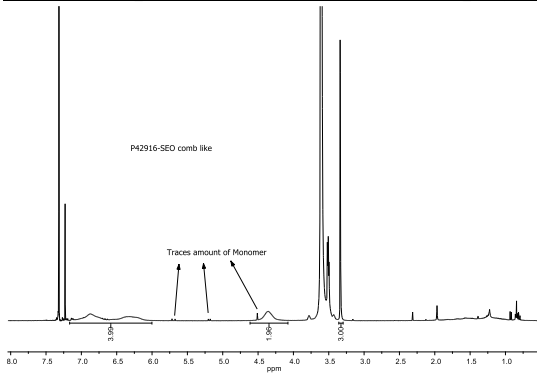
Characterization:

The molecular weight and polydispersity index (PDI) of polymers are obtained by size exclusion chromatography. The composition of grafting polymer is determined by NMR.

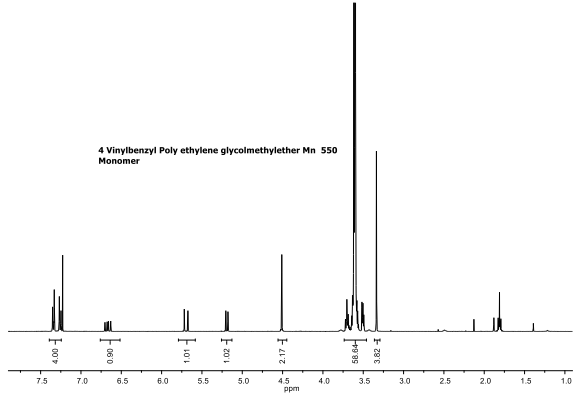
Solubility:

Polystyrene-g-poly(poly ethylene glycol methylether) is soluble in THF, DMF, chloroform.

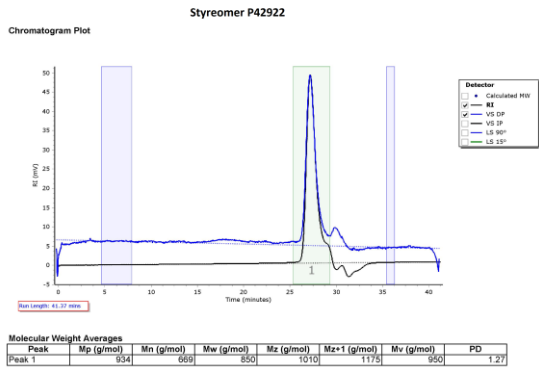
¹H-NMR spectrum of the Comb like polymer:



¹H-NMR spectrum of the monomer-4 vinyl benzyl polyethylene glycol methylether:



SEC elugram of styreomer P42922:



SEC elugram of Polymer:

