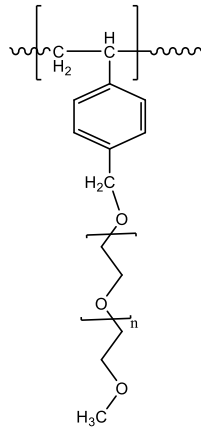


Sample Name: **Polystyrene Graft Poly ethylene glycol methylether (Mw 550)**

Sample #: **P42938-SEOcomb**

Structure:

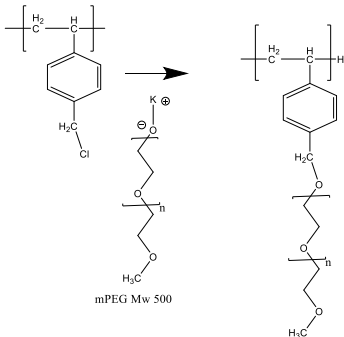


Composition:

Mn x 10 ³ (Total)	Mn x 10 ³ (mPEG)	Mw/Mn
72.5	0.75	1.049

Synthesis Procedure:

The polymer was synthesized by RAFT polymerization process using Polymer back bone modification.



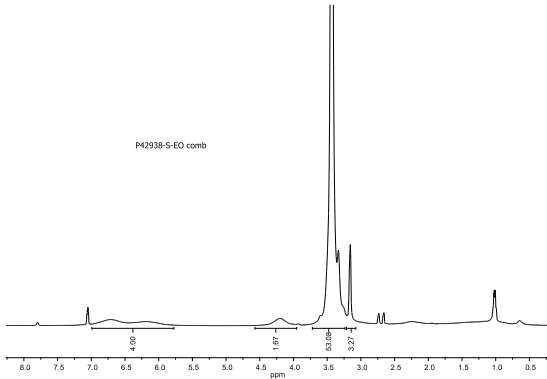
Characterization:

The molecular weight and polydispersity index (PDI) of polymers are obtained by size exclusion chromatography. The composition of grafting polymer is determined by NMR.

Solubility:

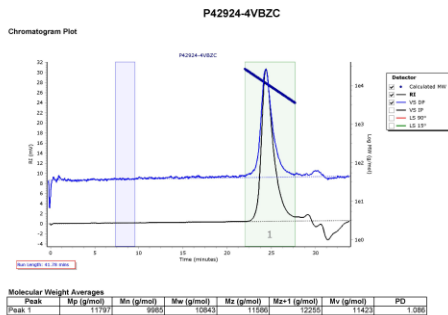
Polystyrene-g-poly(poly ethylene glycol methylether) is soluble in THF, DMF and chloroform.

¹H-NMR spectrum of the polymer:



SEC elugram of Polymer Poly 4-Vinyl benzyl chloride:

Agilent GPC/SEC Software



SEC elugram of the sample:

