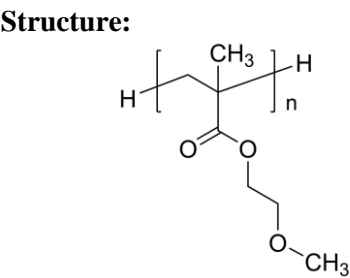


Sample Name:
Poly(2-Methoxyethyl methacrylate)

Sample #: P42964-MeOEMA



Composition:

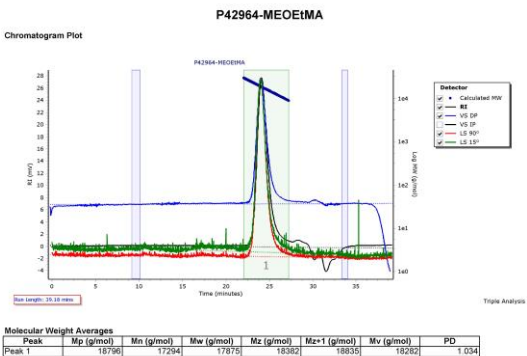
Mn x 10 ³	PDI
17.0	1.03

Synthesis Procedure:
Poly(2-methoxyethyl methacrylate) is obtained by GTP polymerization process.

Characterization:
The product was characterized by size exclusion chromatography (SEC) and DSC thermal analysis.

Thermal analysis:
Thermal analysis of the samples was carried out on a TA Q100 differential scanning calorimeter at a heating rate of 10°C/min. The midpoint of the slope change of the heat flow plot of the second heating scan was considered as the glass transition temperature (Tg).

SEC elugram of Homopolymer:



DSC thermogram of the polymer:

