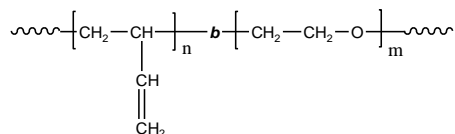


**Sample Name:** Poly (butadiene-b-ethylene oxide)

**Sample #:** P43223A-BdEO

*Poly butadiene rich in 1,2 microstructures*

### Structure



### Composition:

Mn x 10 <sup>3</sup> Bd-b-EO	Mw/Mn (PDI)	% 1,2 addition Butadiene
2.0-b-0.95	1.01	>90.0

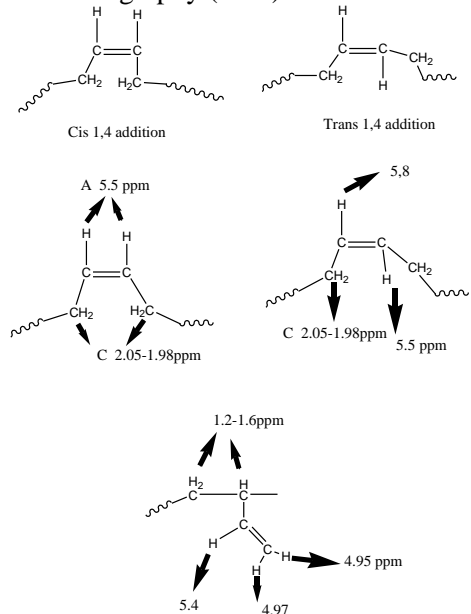
Dp: PBd(37)-b-PEO(22)

### Synthesis:

The polymer was synthesized by anionic polymerization process.

### Characterization:

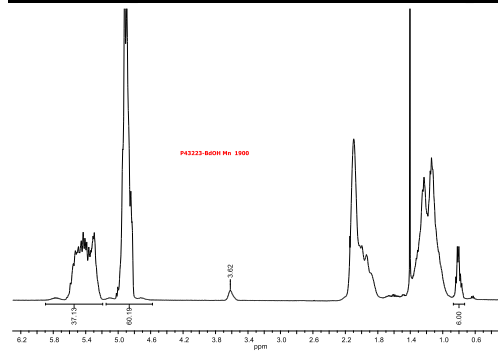
The product was characterized by size exclusion chromatography (SEC) and <sup>1</sup>H NMR.



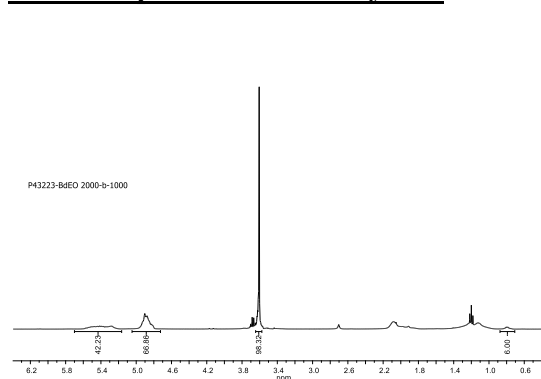
### Solubility:

Polymer is soluble in DMF, THF, toluene, hexane, cyclohexane and CHCl<sub>3</sub>.

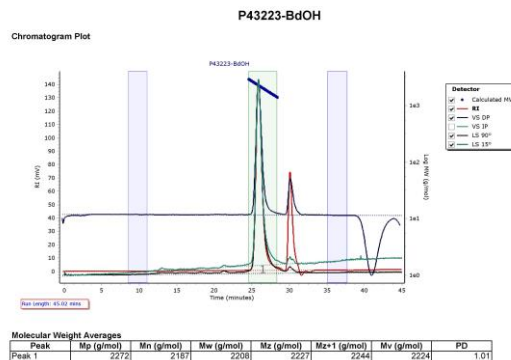
### <sup>1</sup>H NMR spectrum of the BdOH Sample:



### <sup>1</sup>H NMR spectrum of the Polymer:



### SEC elugram of the BdOH Sample:



### SEC elugram of the Polymer:

