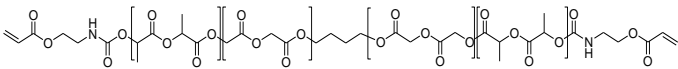


Sample Name: Poly(DL-lactide-co-glycolide), α,ω -bis(acryloxy)-terminated, with 1,4-butanedioxy in the middle of polymer chain

Sample #: P60652-DLLAGly-2Acrylate

Structure:



Composition: Functionality quantitative

$M_n \times 10^3$	PDI
10.0	1.3

DLLA: Glycolide Molar ratio 52:48

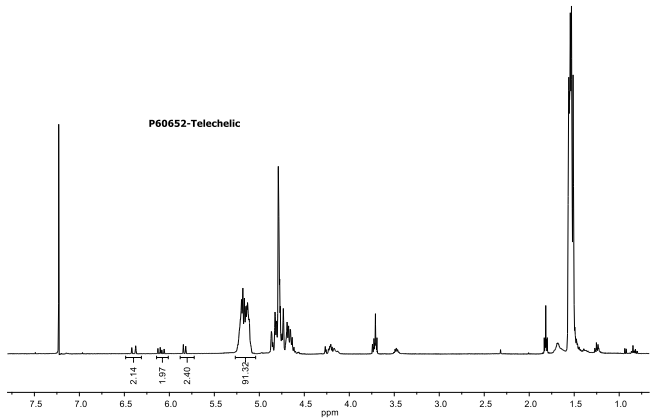
Synthetic Procedure:

The product was synthesized by using 1,4 Butane diol initiator and Sn Octoate catalyst followed by treating polymer with 2- Isocyanato ethyl acrylate

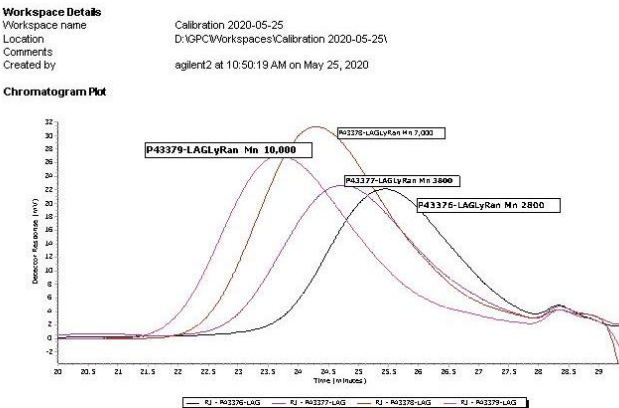
Characterization:

The product was characterized by size exclusion chromatography (SEC) and ^1H NMR data analysis.

^1H NMR spectrum of DLLAGly-2Acrylate:



SEC profile of the polymer:



^1H NMR spectrum of Random copolymer:

