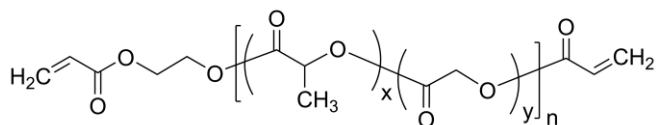


Sample Name: Poly(DL-lactide-co-glycolide), α,ω -bis(acryloxy)-terminated

Sample #: P43379A-DLLAGly-2Acrylate

Structure:



Composition: Functionality quantitative

$M_n \times 10^3$	PDI
10.0	1.3

DLLA: Glycolide Molar ratio 52:48

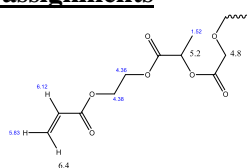
Synthetic Procedure:

The product was synthesized by using 2-Hydroxy ethyl acrylate initiator and Sn Octoate catalyst followed by treating polymer with acrylic anhydride in the presence of (Et)3N in THF.

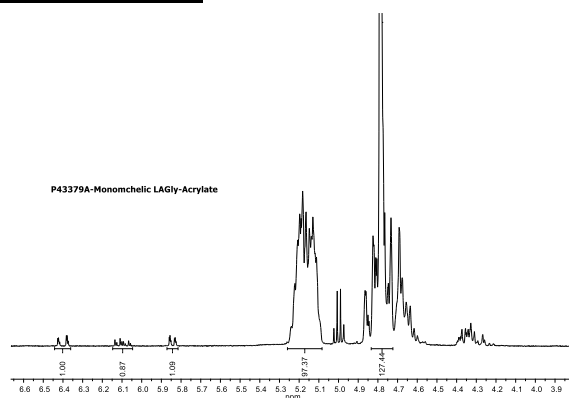
Characterization:

The product was characterized by size exclusion chromatography (SEC) and ^1H NMR data analysis.

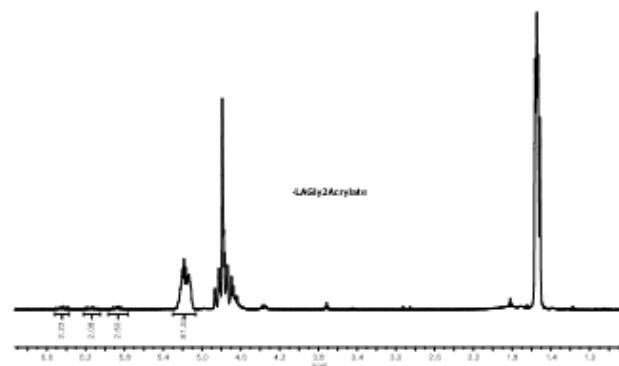
Chemical shifts assignments



H NMR spectrum of Random copolymer bearing acryloyl moieties:



HNMR spectrum of P43379A-dLLAGly-2Acrylate:



SEC profile of the polymer:

Workspace Details

Workspace name

Location

Comments

Created by

Calibration 2020-05-25

D:\GPC\Workspaces\Calibration 2020-05-25\

agilent2 at 10:50:19 AM on May 25, 2020

Chromatogram Plot

