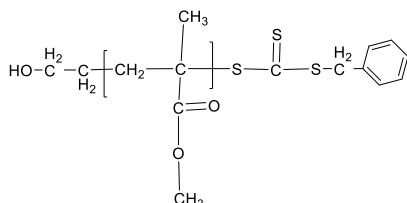


Sample Name: Poly(methyl methacrylate), α -hydroxyethyl-terminated

Sample ID #: P43605-MMAOH

Structure:

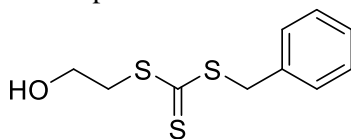


Composition:

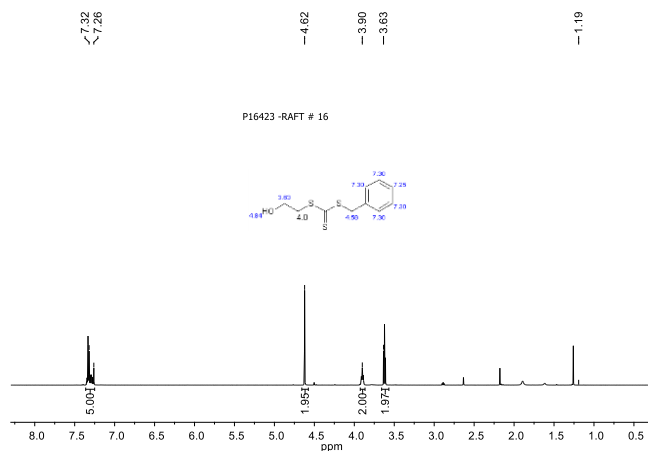
$M_n \times 10^3$ (g/mol)	M_w/M_n
13.5	2.4
CAS registry number: 9011-14-7	

Synthesis Procedure:

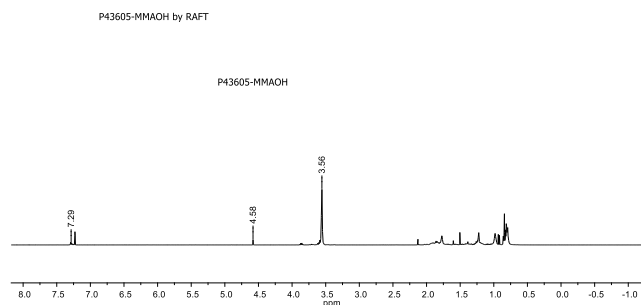
The polymer was obtained by RAFT Polymerization process.



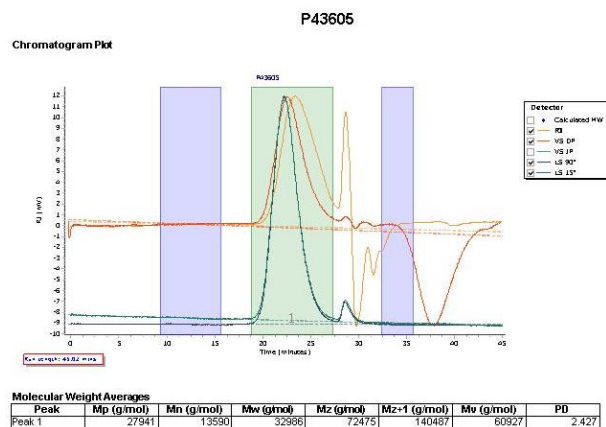
$^1\text{H-NMR}$ spectrum of RAFT (400 MHz, CDCl_3):



$^1\text{H-NMR}$ spectrum of the Sample:



SEC chromatogram of the polymer:



Characterization:

The molecular weight and polydispersity index of the polymer were determined by size exclusion chromatography (SEC). SEC analysis was performed on Agilent Technologies 1260 Infinity II GPC/SEC system equipped with triple detector, three columns and using tetrahydrofuran (THF) as a mobile phase.