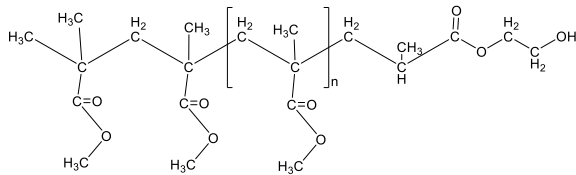


**Sample Name:** Poly(methyl methacrylate),  $\alpha$ -hydroxy ethyl terminated

**Sample ID #:** P43607-MMAOH

**Structure:**



**Composition:**

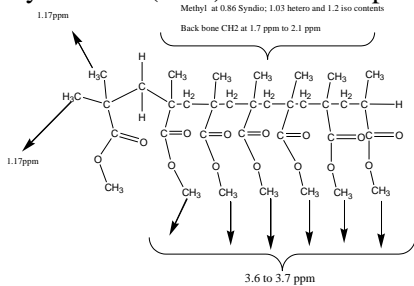
$M_n \times 10^3$ (g/mol)	$M_w/M_n$
0.8	1.2
CAS registry number: 9011-14-7	

**Synthesis Procedure:**

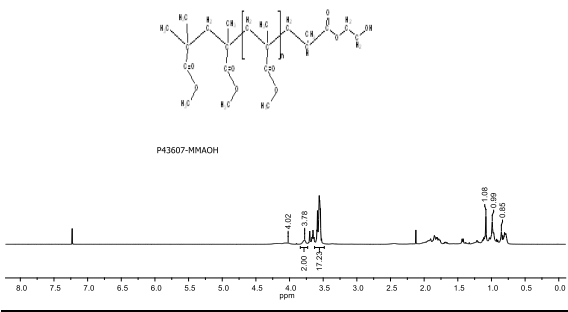
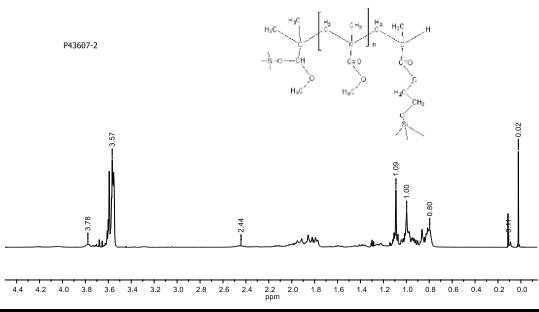
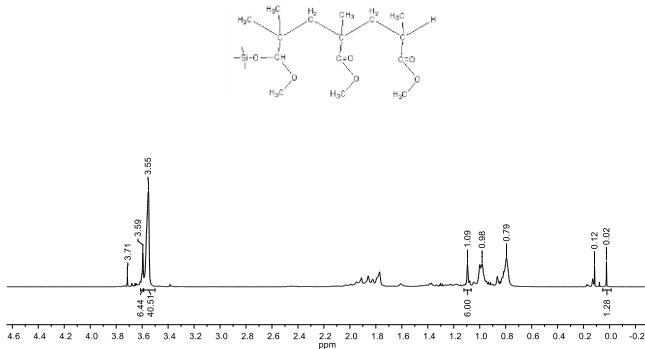
Poly(methyl methacrylate) was obtained by GTP polymerization process.

**Characterization:**

The molecular weight and polydispersity index of the polymer were determined by size exclusion chromatography (SEC). SEC analysis was performed on Agilent Technologies 1260 Infinity II GPC/SEC system equipped with triple detector, three columns and using tetrahydrofuran (THF) as a mobile phase.



**$^1\text{H}$ -NMR spectrum of the product at different steps:**



**SEC chromatogram of the polymer:**

