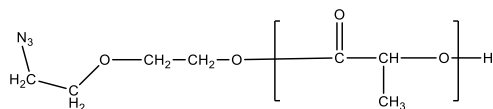


**Sample Name:**  
**Poly(lactide), ( $\alpha$ -azide,  $\omega$ -hydroxy)-terminated**

*Linker EthylEthoxy*

**Sample #: P43609A-LAN3 (DL-Form)**

**Structure:**

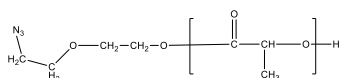
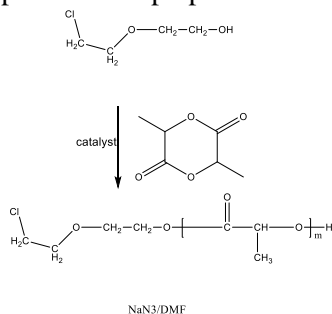


**Composition:**

Mn x 10 <sup>3</sup>	PDI
2.2	1.8

**Synthesis Procedure:**

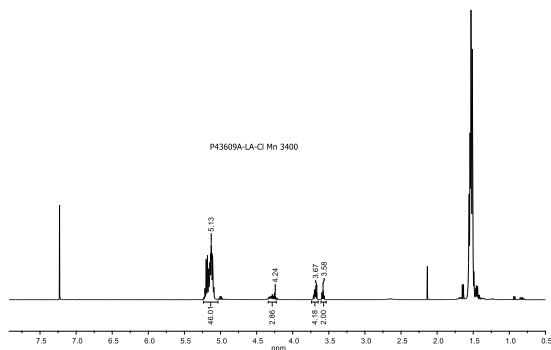
The following reaction scheme shows how the product was prepared:



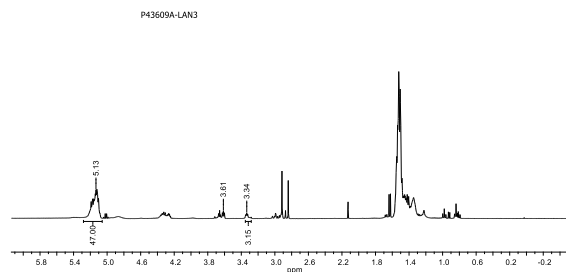
**Characterization:**

The product was characterized by size exclusion chromatography (SEC) and <sup>1</sup>H NMR data analysis.

**HNMR spectrum of Cl-LA:**



**HNMR spectrum of N3-LA:**



**SEC elugram of the polymer:**

Agilent GPC/SEC Software

