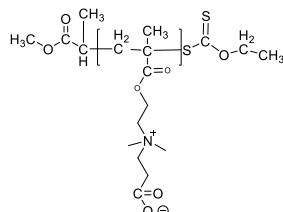


Sample Name:

Poly(carboxybetaine methacrylate)
(CBMA) based on (N,N-dimethylaminoethyl methacrylate)

Sample #: **P43508A-CBMA**

Structure:

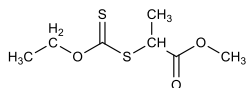


Composition:

Mn × 10 ³	PDI
2.0	2.0

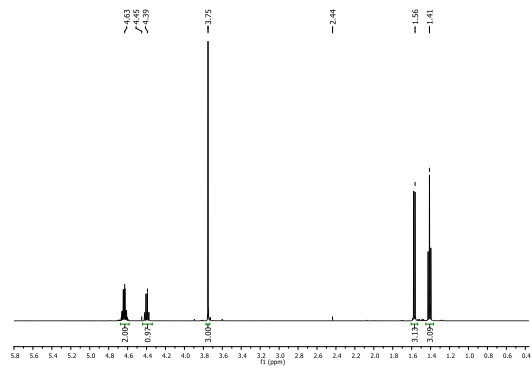
Synthesis Procedure:

The polymer was synthesized by RAFT polymerization process using following RAFT.



Chemical Formula: C₇H₁₂O₃S₂
Molecular Weight: 208.3

¹H NMR spectrum of RAFT (400 MHz, CDCl₃):



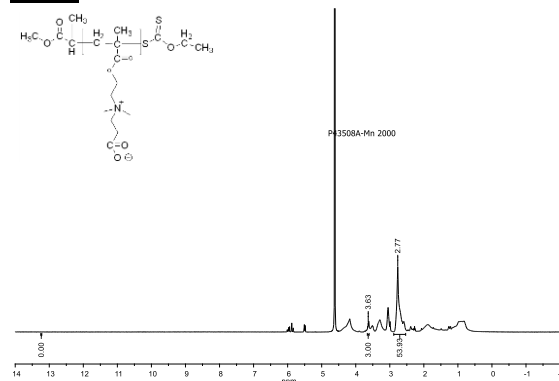
Characterization:

The product was characterized by size exclusion chromatography (SEC) and ¹H NMR data analysis.

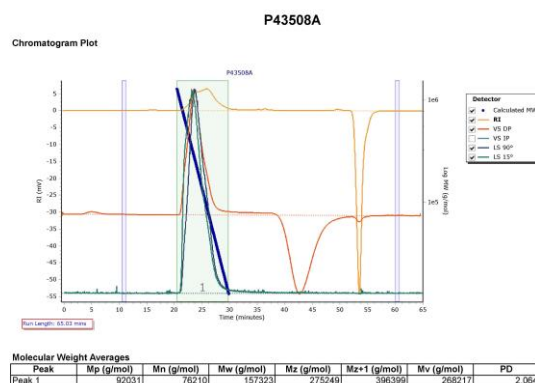
Solubility:

Polymer is soluble in water.

HNMR spectrum of the polymer run in D2O:



SEC profile of Homopolymer:



Mn of the polymer calculated by its HNMR, and Mw/Mn by GPC carried out in aqueous system.