

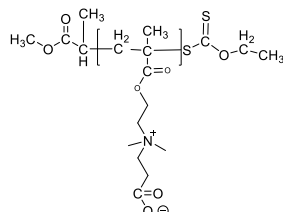
Sample Name:

**Poly(carboxybetaine methacrylate)**

*(CBMA) based on (N,N-dimethylaminoethyl methacrylate)*

Sample #: **P43508B-CBMA**

**Structure:**

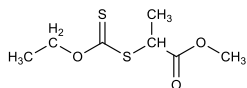


**Composition:**

$M_n \times 10^3$	PDI
2.6	1.6

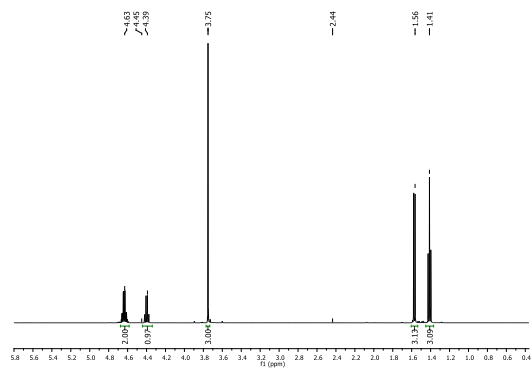
**Synthesis Procedure:**

The polymer was synthesized by RAFT polymerization process using following RAFT.



Chemical Formula:  $C_7H_{12}O_3S_2$   
Molecular Weight: 208.3

**$^1H$  NMR spectrum of RAFT (400 MHz,  $CDCl_3$ ):**



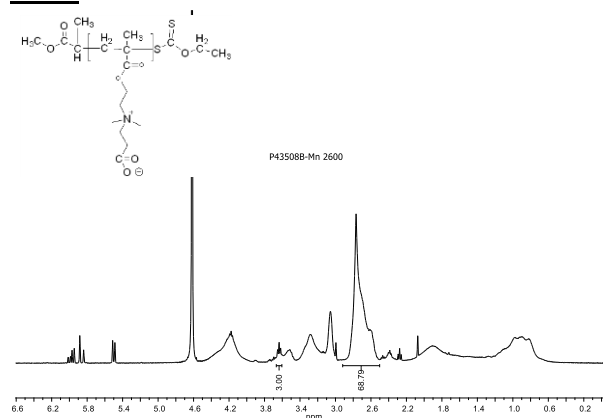
**Characterization:**

The product was characterized by size exclusion chromatography (SEC) and  $^1H$  NMR data analysis.

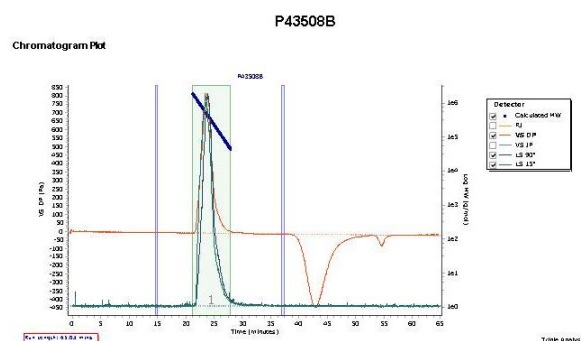
**Solubility:**

Polymer is soluble in water.

**HNMR spectrum of the polymer run in  $D_2O$ :**



**SEC profile of Homopolymer:**



Mn of the polymer calculated by its HNMR, and Mwn by GPC carried out in aqueous system