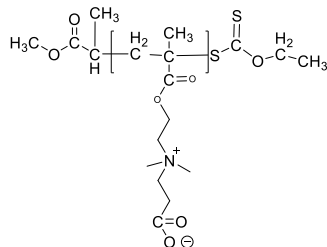


Sample Name:
Poly(carboxybetaine methacrylate)
(CBMA) based on (N,N-dimethylaminoethyl methacrylate)

Sample #: **P43508D-CBMA**

Structure:

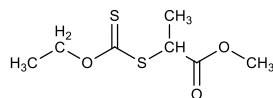


Composition:

| Mn × 10 ³ | PDI |
|----------------------|-----|
| 0.6 | 1.1 |

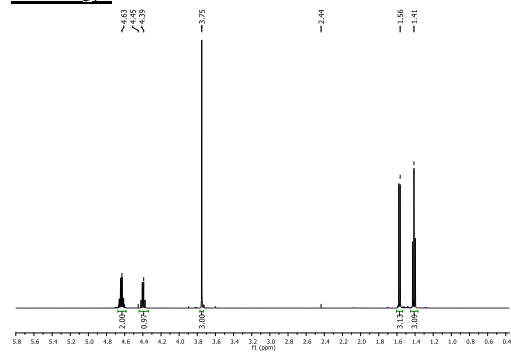
Synthesis Procedure:

The polymer was synthesized by RAFT polymerization process using following RAFT:



Chemical Formula: C₇H₁₂O₃S₂
Molecular Weight: 208.3

¹H NMR spectrum of RAFT (400 MHz, CDCl₃):



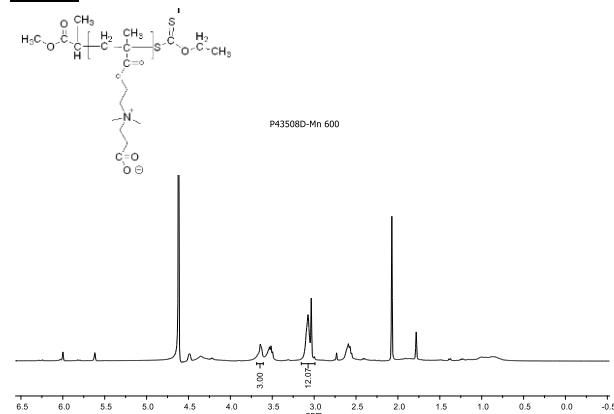
Characterization:

The product was characterized by size exclusion chromatography (SEC) and ¹H NMR data analysis.

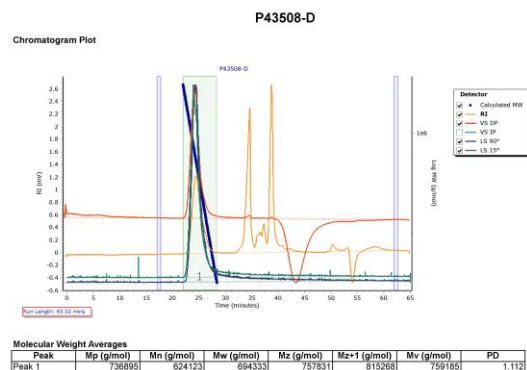
Solubility:

Polymer is soluble in water.

HNMR spectrum of the polymer run in D2O:



SEC elugram of Homopolymer:



Mn of the polymer calculated by its HNMR, and Mw/Mn by GPC carried out in aqueous system.