

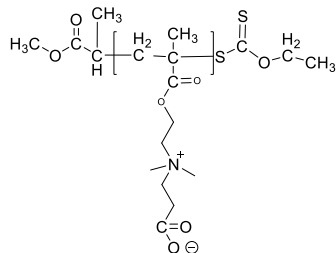
Sample Name:

Poly(carboxybetaine methacrylate)

(CBMA) based on (N,N-dimethylaminoethyl methacrylate)

Sample #: **P43508E-CBMA**

Structure:

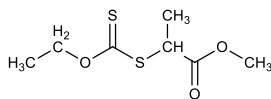


Composition:

$M_n \times 10^3$	PDI
0.8	1.1

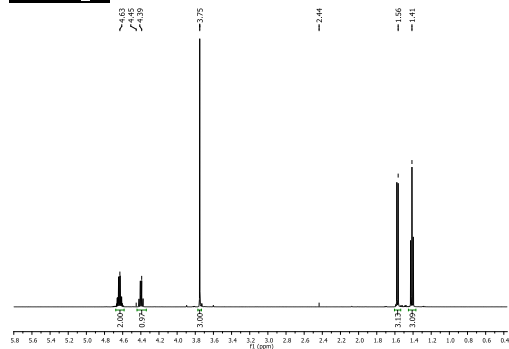
Synthesis Procedure:

The polymer was synthesized by RAFT polymerization process using following RAFT:



Chemical Formula: $C_7H_{12}O_3S_2$
Molecular Weight: 208.3

1H NMR spectrum of RAFT (400 MHz, $CDCl_3$):



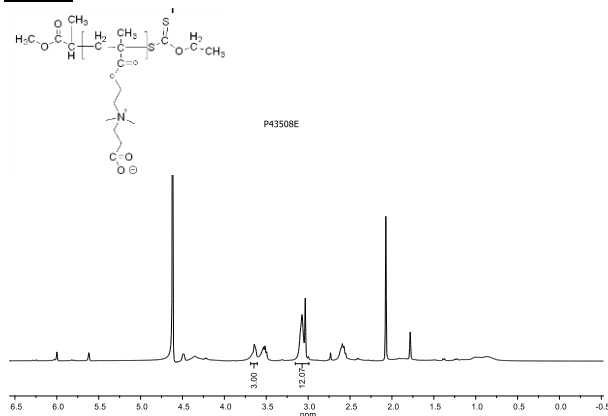
Characterization:

The product was characterized by size exclusion chromatography (SEC) and 1H NMR data analysis.

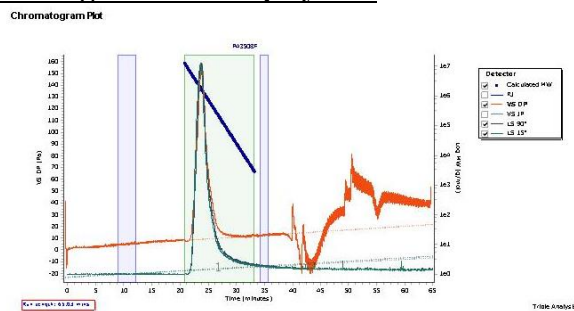
Solubility:

Polymer is soluble in water.

HNMR spectrum of the polymer run in D_2O :



SEC elugram of Homopolymer:



Mn of the polymer calculated by its HNMR, and Mw/Mn by GPC carried out in aqueous system.